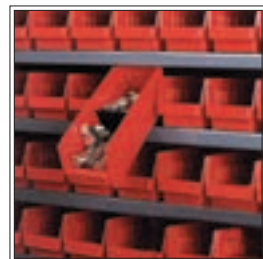
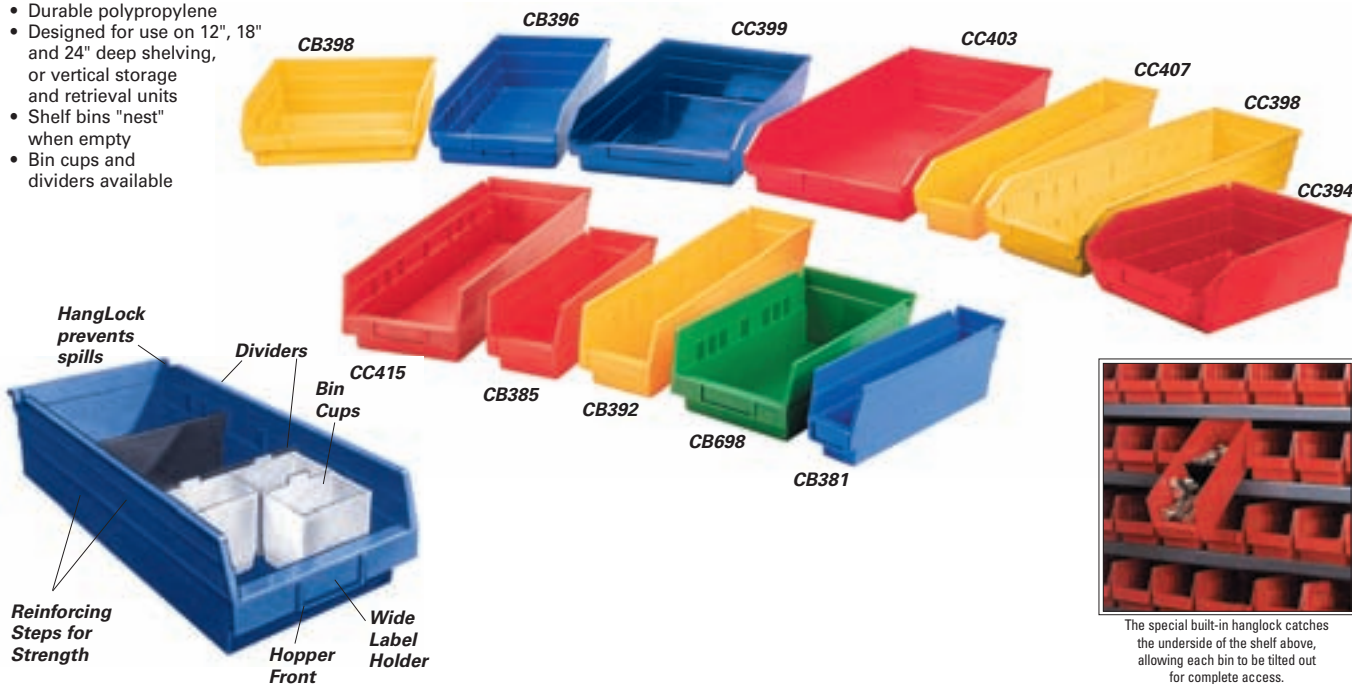


# PLASTIC SHELF BINS

- Economical way to store and display parts and components
- Durable polypropylene
- Designed for use on 12", 18" and 24" deep shelving, or vertical storage and retrieval units
- Shelf bins "nest" when empty
- Bin cups and dividers available



The special built-in hanglock catches the underside of the shelf above, allowing each bin to be tilted out for complete access.

Blue	Bin Model No.	Yellow	Green	Mfg. No.	Outside Dimensions L" x W" x H"	Inside Dimensions L" x W" x H"	Qty /Case	Dividers, up to 7 per bin	Bin Cups Per Bin	CD041
Red	Red	Yellow	Green					CB379	CB380	CD036
CB381	CB382	CB383	CB696	30-110	11 5/8 x 2 3/4 x 4	10 1/4 x 1 5/8 x 4	24	N/A	N/A	N/A
CB384*	CB385*	CB386*	CB697*	30-120	11 5/8 x 4 1/8 x 4	10 1/4 x 3 x 4	24	CB420	5	2
CB393*	CB394*	CB395*	CB698*	30-130	11 5/8 x 6 5/8 x 4	10 1/4 x 5 1/2 x 4	12	CB421	9	4
CC393	CC394	CC395	N/A	QSB107	11 7/8 x 8 1/8 x 4	10 3/4 x 7 1/2 x 3 7/8	20	CB867	N/A	N/A
CC396	CC397	CC398	N/A	QSB109	11 7/8 x 11 1/8 x 4	10 3/4 x 10 3/8 x 3 7/8	8	CB869	N/A	N/A
CB390*	CB391*	CB392*	CB699*	30-128	17 7/8 x 4 1/8 x 4	16 1/2 x 3 x 4	12	CF021	8	3
CB396*	CB397*	CB398*	CB700*	30-138	17 7/8 x 6 5/8 x 4	16 1/2 x 5 1/2 x 4	12	CF022	15	6
CC399	CC400	CC401	N/A	QSB108	17 7/8 x 8 1/8 x 4	16 1/2 x 7 1/2 x 3 7/8	10	CB867	N/A	N/A
CC402	CC403	CC404	N/A	QSB110	17 7/8 x 11 1/8 x 4	16 3/8 x 10 3/8 x 3 7/8	8	CB869	N/A	N/A
CC405	CC406	CC407	N/A	QSB105	23 7/8 x 4 1/8 x 4	22 1/4 x 3 1/4 x 3 7/8	8	CB861	N/A	N/A
CC408	CC409	CC423	N/A	QSB106	23 7/8 x 6 5/8 x 4	22 1/4 x 5 1/2 x 3 7/8	8	CB862	N/A	N/A
CC411	CC412	CC413	N/A	QSB114	23 7/8 x 8 1/8 x 4	22 1/4 x 7 1/2 x 3 7/8	6	CB867	N/A	N/A
CC414	CC415	CC416	N/A	QSB116	23 7/8 x 11 1/8 x 4	22 1/4 x 10 3/8 x 3 7/8	6	CB869	N/A	N/A

\* 2 full width adjustable/removable dividers included

## BIN DIVIDERS

Model No.	Mfg. No.	Description	Qty/case
CF021	40-128	Divider, 3" wide	24
CF022	40-138	Divider, 5 1/2" wide	24
CB867	DSB107	Divider, 8 1/8" wide	50
CB869	DSB109	Divider, 11 1/8" wide	50
CB861	DSB101	Divider, 4 1/8" wide	50
CB862	DSB102	Divider, 6 5/8" wide	50
CB420	40-120	Divider, 3" wide	24
CB421	40-130	Divider, 5 1/2" wide	24

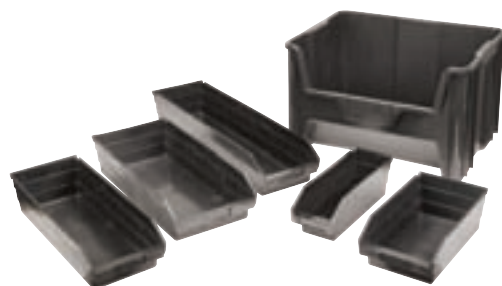
## BIN CUPS

Model No.	Mfg. No.	Colour	Description
CB379	30-101	White	Bin cup, 3 1/4" x 2"
CB380	30-102	White	Bin cup, 5" x 2 3/4"
CD036	QBC111	Yellow	Bin cup, 3 1/4" x 1 3/4"
CD041	QBC112	Yellow	Bin cup, 5 1/8" x 2 3/4"

## RECYCLED SHELF BINS

- Manufactured from recycled 100% post consumer, high density polyethylene
- Available in black only

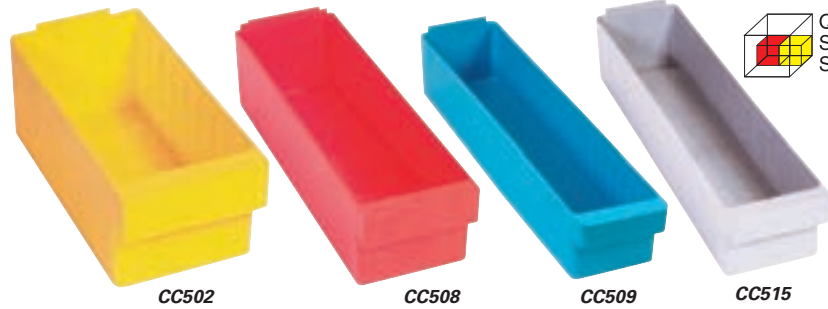
Model No.	Mfg. No.	Outside Dimensions L" x W" x H"	Inside Dimensions L" x W" x H"	Qty /Case	Wt. lbs.	Dividers Model No.
CB850	QSB 101 BR	11 7/8 x 4 1/8 x 4	10 3/4 x 3 1/4 x 3 7/8	36	0.41	CB861
CB851	QSB 102 BR	11 7/8 x 6 5/8 x 4	10 3/4 x 5 1/2 x 3 7/8	30	0.53	CB862
CB954	QSB 104 BR	17 7/8 x 6 5/8 x 4	16 1/2 x 5 1/2 x 3 7/8	20	0.9	CB862
CB854	QSB 105 BR	23 7/8 x 4 1/8 x 4	22 1/4 x 3 1/4 x 3 7/8	16	0.94	CB861
CB855	QSB 106 BR	23 7/8 x 6 5/8 x 4	22 1/4 x 5 1/2 x 3 7/8	8	1.5	CB862
CB857	QSB 108 BR	17 7/8 x 8 1/8 x 4	16 1/2 x 7 1/2 x 3 7/8	10	1.2	CB867
CB860	QSB 114 BR	23 7/8 x 8 1/8 x 4	22 1/4 x 7 1/2 x 3 7/8	6	1.5	CB867
CC304	QSB 116B	23 7/8 x 11 1/8 x 4	22 1/4 x 10 3/8 x 3 7/8	6	2.0	CB869
CC241	QGH 700 BR	15 1/4 x 19 7/8 x 12 7/16	-	3	13	N/A



# STORAGE BINS

## EURO DRAWERS

- Heavy-duty design for efficient organization of heavy parts, supplies, tools or equipment
- Injection moulded from virgin grade high-impact polystyrene
- 12-gauge thick wall
- Completely waterproof
- Oil and chemical-resistant
- Smooth front curved pull handle has ample room for pressure sensitive identification labels or bar codes
- Front handle has 3/4" opening
- Full width back ledge ensures spill free use



Model No.	Series	Colour	Outside Dimensions			Inside Dimensions			Qty /Case	Divider Model No.
			L"	x W"	x H"	L"	x W"	x H"		
CC501	QED601	Blue	11 5/8	x 5 9/16	x 4 5/8	10 9/16	x 5 3/16	x 4 3/8	24	CC517
CC502	QED601	Yellow	11 5/8	x 5 9/16	x 4 5/8	10 9/16	x 5 3/16	x 4 3/8	24	CC517
CC503	QED601	Grey	11 5/8	x 5 9/16	x 4 5/8	10 9/16	x 5 3/16	x 4 3/8	24	CC517
CC504	QED601	Red	11 5/8	x 5 9/16	x 4 5/8	10 9/16	x 5 3/16	x 4 3/8	24	CC517
CC505	QED602	Blue	17 5/8	x 5 9/16	x 4 5/8	16 9/16	x 5 3/16	x 4 3/8	24	CC517
CC506	QED602	Yellow	17 5/8	x 5 9/16	x 4 5/8	16 9/16	x 5 3/16	x 4 3/8	24	CC517
CC507	QED602	Grey	17 5/8	x 5 9/16	x 4 5/8	16 9/16	x 5 3/16	x 4 3/8	24	CC517
CC508	QED602	Red	17 5/8	x 5 9/16	x 4 5/8	16 9/16	x 5 3/16	x 4 3/8	24	CC517
CC509	QED603	Blue	23 7/8	x 5 9/16	x 4 5/8	22 3/4	x 5 3/16	x 4 3/8	12	CC517
CC510	QED603	Yellow	23 7/8	x 5 9/16	x 4 5/8	22 3/4	x 5 3/16	x 4 3/8	12	CC517
CC511	QED603	Grey	23 7/8	x 5 9/16	x 4 5/8	22 3/4	x 5 3/16	x 4 3/8	12	CC517
CC512	QED603	Red	23 7/8	x 5 9/16	x 4 5/8	22 3/4	x 5 3/16	x 4 3/8	12	CC517
CC513	QED604	Blue	17 5/8	x 3 3/4	x 4 5/8	16 9/16	x 3 1/2	x 4 3/8	24	CC518
CC514	QED604	Yellow	17 5/8	x 3 3/4	x 4 5/8	16 9/16	x 3 1/2	x 4 3/8	24	CC518
CC515	QED604	Grey	17 5/8	x 3 3/4	x 4 5/8	16 9/16	x 3 1/2	x 4 3/8	24	CC518
CC516	QED604	Red	17 5/8	x 3 3/4	x 4 5/8	16 9/16	x 3 1/2	x 4 3/8	24	CC518

Add dividers to Euro Drawers for additional storage possibilities!



## EURO DRAWER CLOSED SHELF UNITS

- 13 heavy-duty grey enamel shelves
- Capacity: 630 lbs. per shelf
- Shipped knocked down

### INCLUDES:

- 72 QED601 Series Euro drawers
- Dimensions: 36" W x 12" D x 76" H

- 108 QED604 Series Euro drawers
- Dimensions: 36" W x 18" D x 76" H

Model No.					No. of
Blue	Yellow	Grey	Red	Description	Shelves
CF102	CF103	CF104	CF105	Starter	13
CF159	CF160	CF161	CF162	Add-On	13

Model No.					No. of
Blue	Yellow	Grey	Red	Description	Shelves
CF110	CF111	CF112	CF113	Starter	13
CF167	CF168	CF169	CF170	Add-On	13

- 72 QED602 Series Euro drawers
- Dimensions: 36" W x 18" D x 76" H

- 72 QED603 Series Euro drawers
- Dimensions: 36" W x 24" D x 76" H

CF106	CF107	CF108	CF109	Starter	13
CF163	CF164	CF165	CF166	Add-On	13

CF114	CF115	CF116	CF117	Starter	13
CF171	CF172	CF173	CF174	Add-On	13



## STACK-N-NEST® STORAGE BINS

- Great for storing, assembling and transporting small parts, components and finished goods
- Designed for maximum efficiency and utility
- Set together one way they stack and the other way they nest
- May be used on shelving or stacked up
- Heavy-duty design allows higher stacking
- In the plant, use the same bin for storage, handling, and assembly, no need to transfer contents



Model No.	Colour	Outside Dimensions			Wt. lbs.
		L"	x W"	x D"	
CC890	Blue	15 1/4	x 12 1/4	x 6	2
CC891	Red	15 1/4	x 12 1/4	x 6	2
CC892	Yellow	15 1/4	x 12 1/4	x 6	2