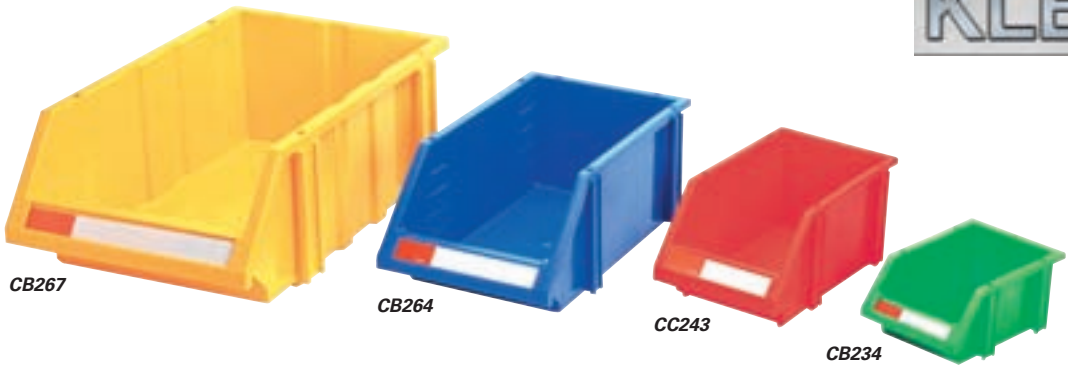


STORAGE BINS

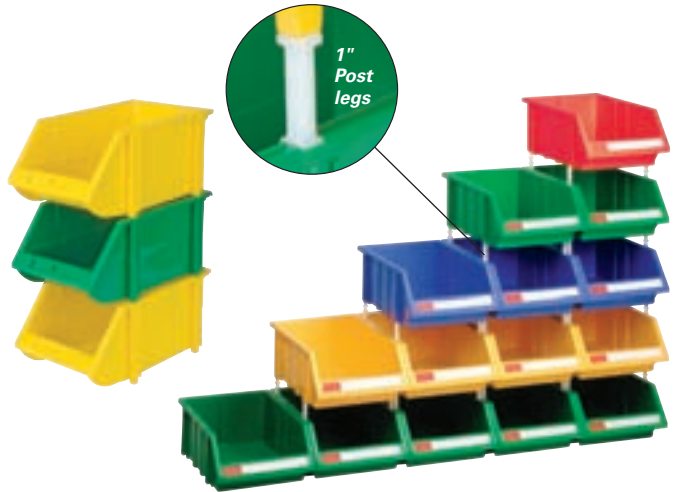
HI-STAK PLASTIC BINS



- Innovative stacking design allows for greater visibility and easier access to contents
- Are guaranteed unbreakable and distortion-free from -40°C to 120°C
- Unaffected by oil, alkaline and most acids
- Four 1" post-type legs allow stacking
- 1" of extra height between bins allows for easier access and greater visibility of bin contents
- Attach to each other's sides for a strong, more stable arrangement
- Ideal in production or for store display
- I.D. card with clear plastic shield provided with each bin

Model No.				Dimensions		Wt.	Qty
Blue	Yellow	Green	Red	L" x W" x H"	Lbs.	/Case	
CB260	CB261	CC234	CC242	7.2 x 4.8 x 3.2	0.10	60	
CB262	CB263	CC235	CC243	10.0 x 6.0 x 4.8	0.15	36	
CB264	CB265	CC236	CC244	14.0 x 8.0 x 6.0	0.35	18	
CC239	CC240	CC237	CC245	18.0 x 8.0 x 7.1	0.55	12	
CB266	CB267	CC238	CC246	18.0 x 12.0 x 7.1	0.60	8	

* Add 1 inch to overall height when stacking on legs.



GIANT STACKING CONTAINERS

- Designed for multiple applications in recycling, storing parts, tools and warehouse items
- Will stack up to 6 high creating sturdy, tall storage systems
- Large grip side handles
- Extra thick side walls with reinforcing ribs allow for 100 lbs. stack capacity per bin
- 1/4" drill holes in bottom allow for drainage
- Optional clear window and labels are available
- Outside dimensions : 15 1/4" L x 19 7/8" W x 12 7/16" H



Model No.					Mfg. No.	Qty /case
Grey	Blue	Ivory	Black	Red		
CB838	CB839	CB841	CB842	CC305	QGH700	3

GIANT STACK CONTAINER SHELF UNIT

- Includes 10 QGH700 storage bins and heavy-duty grey enamel shelves
- 42" W x 18" D x 76" H
- Capacity: 500 lbs. per shelf
- Shipped knocked down



Model No.					Description	No. of shelves
Grey	Blue	Ivory	Black	Red		
CF056	CF057	CF059	CF060	CF066	Starter	6
CF061	CF062	CF064	CF065	CF067	Add-On	6

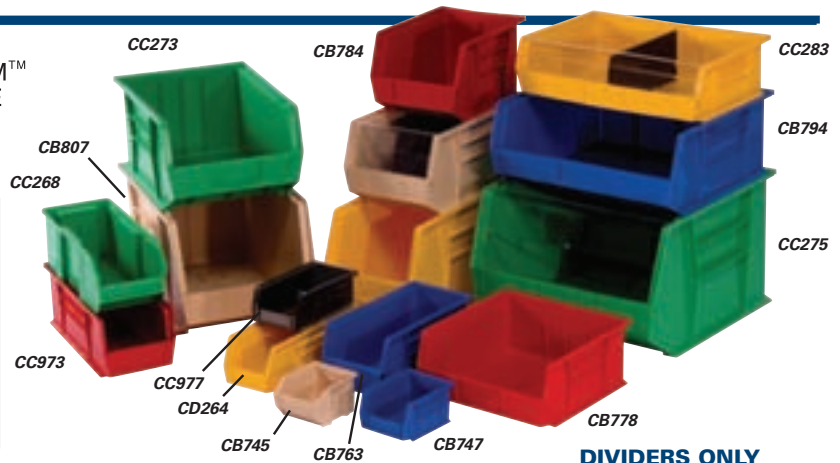
STORAGE BINS

QUANTUM™ BINS

- Heavy-duty, virgin, high density polypropylene/polyethylene
- Autoclavable up to 250°F
- Large multiple label slots
- Stackable
- Optional dividers and clear windows available for most units
- Hangs on louvered panels, rails and carts
- Jumbo bins can not hang on louvered panels or rail systems
- Jumbo bins have a stack capacity of up to 100 lbs. and can stack up to 6 bins high



**JUMBO 24" L
ULTRA BINS
(23 7/8" W)**



DIVIDERS ONLY

Model No. (BINS)						Mfg. No.	Outside Dim.			Qty /Case	Bin load Cap. lbs.	Length Model No.	Clear Window Model No.		
Black	Blue	Yellow	Red	Ivory	Green		L"	x	W"					x	H"
CC975	CB739	CB741	CB744	CB745	CC264	QUS 205	4 1/2	x	4 1/8	x	3	24	8	CB824	-
CC976	CB747	CB750	CB751	CB753	CC265	QUS 210	5 3/8	x	4 1/8	x	3	24	10	CB825	-
CC977	CB756	CB757	CB759	CB762	CC266	QUS 220	7 1/2	x	4 1/8	x	3	24	10	CB826	-
CD276	CD249	CD262	CD263	CD264	CD265	QUS 224	10 7/8	x	4 1/8	x	4	12	-	CD250	CD266
CC978	CB763	CB765	CB766	CB768	CC267	QUS 230	11	x	5 1/2	x	5	12	30	CB829	CB814
CC979	CB769	CB771	CB772	CB774	CC268	QUS 233	13 1/2	x	5 1/2	x	5	12	30	CB828	CB812
CC974	CC971	CC972	CC973	CC990	CC970	QUS 234	14 3/4	x	5 1/2	x	5	12	-	CB836*	-
CC980	CB775	CB777	CB778	CB780	CC269	QUS 235	11	x	11	x	5	6	50	CC569	CB812
CC576	CB781	CB783	CB784	CB786	CC270	QUS 239	11	x	8 1/4	x	7	6	50	CB829	CB815
CC577	CB787	CB789	CB790	CB792	CC271	QUS 240	14 3/4	x	8 1/4	x	7	12	60	CB830	CB816
CC983	CC282	CC283	CC284	CC285	CC286	QUS 245	11	x	16 1/2	x	5	6	60	CB831	CB818
CC578	CB794	CB795	CB796	CB797	CC272	QUS 250	14 3/4	x	16 1/2	x	7	6	75	CC297	CC300
CC579	CB798	CB800	CB801	CB802	CC273	QUS 255	16	x	11	x	8	4	75	CB831	CB819
CC580	CB803	CB804	CB806	CB807	CC274	QUS 260	18	x	11	x	10	4	75	CB833	CB820
CC581	CC287	CC288	CC289	CC290	CC291	QUS 265	18	x	8 1/4	x	9	6	60	CB834	CB821
CC582	CB808	CB809	CB810	CB811	CC275	QUS 270	18	x	16 1/2	x	11	3	-	CC298	CC301
														CB835	CB822

JUMBO 24" DEEP ULTRA BINS (DO NOT HANG ON LOUVERED PANELS OR RAIL SYSTEMS)

-	CD545	CD547	CD546	-	-	QUS 950	23 7/8	x	8 1/4	x	7	6	-		
-	CD548	CD550	CD549	-	-	QUS 951	23 7/8	x	8 1/4	x	9	6	-		
-	CD551	CD553	CD552	-	-	QUS 952	23 7/8	x	11	x	7	4	-		
-	CD554	CD556	CD555	-	-	QUS 953	23 7/8	x	11	x	10	4	-		
-	CD557	CD559	CD558	-	-	QUS 954	23 7/8	x	16 1/2	x	11	1	-		
-	CD560	CD562	CD561	-	-	QUS 955	23 7/8	x	18 1/4	x	12	1	-		

JUMBO DIVIDERS ONLY

CD563	CD569
CD564	CD570
CD565	CD571
CD566	CD572
CD567	CD573
CD568	CD574

*Indicates cross divider

OPEN HOPPER STORAGE SHELF UNITS

QUS 239 SERIES

- 28 QUS 239 Series bins
- 7 heavy-duty grey enamel shelves
- Dimensions: 36" W x 12" D x 76" H
- Capacity: 630 lbs. per shelf
- Shipped knocked down



CF118

QUS 240 SERIES

- 28 QUS 240 Series bins
- 7 heavy-duty grey enamel shelves
- Dimensions: 36" W x 12" D x 76" H
- Capacity: 630 lbs. per shelf
- Shipped knocked down



CF126

QUS 250 SERIES

- 14 QUS 250 Series bins
- 7 heavy-duty grey enamel shelves
- Dimensions: 36" W x 12" D x 76" H
- Capacity: 630 lbs. per shelf
- Shipped knocked down



CF132

QUS 240 & 230 SERIES

- 8 QUS 240 Series bins
- 36 QUS 230 Series bins
- 9 heavy-duty grey enamel shelves
- Dimensions: 36" L x 12" D x 76" H
- Capacity: 630 lbs. per shelf
- Shipped knocked down



CF135

Model No.						Description	No. of Shelves
Black	Blue	Yellow	Red	Ivory	Green		
QUS 239 SERIES BINS SHELF UNIT							
CF176	CF118	CF119	CF120	CF121	CF122	Starter	8
CF180	CF140	CF141	CF142	CF143	CF144	Add-On	8
QUS 240 SERIES BINS SHELF UNIT							
CF178	CF123	CF124	CF125	CF126	CF127	Starter	8
CF182	CF150	CF151	CF152	CF153	CF154	Add-On	8

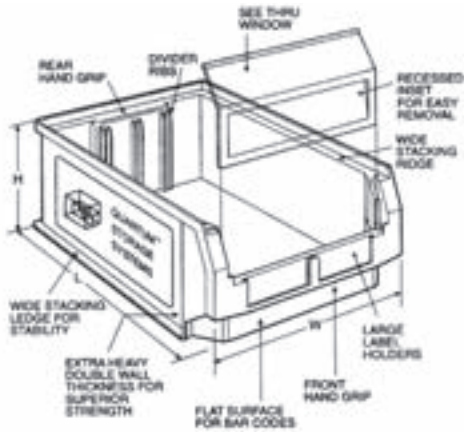
Model No.						Description	No. of Shelves
Black	Blue	Yellow	Red	Ivory	Green		
QUS 250 SERIES BINS SHELF UNIT							
CF177	CF128	CF129	CF130	CF131	CF132	Starter	8
CF181	CF145	CF146	CF147	CF148	CF149	Add-On	8
QUS 240 & 230 SERIES BINS SHELF UNIT							
CF179	CF133	CF134	CF135	CF136	CF137	Starter	9
CF183	CF175	CF155	CF156	CF157	CF158	Add-On	9

GIANT STACKING CONTAINERS

GIANT STACKING CONTAINERS

- Injection moulded from high density polyethylene
- Extra heavy, double wall thickness with interlock preformed lip allows containers to stack securely
- Moulded carrying handle on backside
- Moulded-in divider and label slots
- Optional windows available
- Can withstand temperatures ranging from -40° to 250°F
- Waterproof, will not rust or corrode
- Unaffected by chemicals and solvents
- Mobile bin comes with 2 swivel, 2 rigid 3" casters
- 300-lb mobile capacity
- 200-lb stack capacity

MAGNUM



CC371

CC365

CC364



QUANTUM™
STORAGE
SYSTEMS



CC447

Model No. (BINS)				Mfg. No.	Outside Dimensions			Qty /Case	DIVIDER		WINDOW	
Blue	Green	Red	Yellow		L"	x	W"		x	H"	Model No.	Model No.
CC361	CC362	CC363	CC364	QMS531	19 3/4	x	12 3/8	x	5 7/8	CC381	CC385	
CC365	CC366	CC367	CC368	QMS532	19 3/4	x	12 3/8	x	7 7/8	CC382	CC386	
CC369	CC370	CC371	CC372	QMS533	19 3/4	x	12 3/8	x	11 7/8	CC383	CC387	
CC373	CC374	CC375	CC376	QMS543	19 3/4	x	18 3/8	x	11 7/8	CC384	CC388	
CC377*	CC378*	CC379*	CC380*	QMS743	29	x	18 3/8	x	11 7/8	-	-	
CC447*	CC449*	CC448*	CC450*	QMS843MOB	29	x	18 3/8	x	11 7/8	-	-	

* Includes heavy-duty spread bar for extra strength and support

MAGNUM GIANT OPEN HOPPER BIN SHELVING UNITS

- Dimensions: 18" D x 42" W x 76" H
- Capacity: 500 lbs. per shelf
- Shipped knocked down

Model No.				Description
Red	Blue	Yellow	Green	
SERIES QMS532				
CF072	CF073	CF074	CF075	Starter
CF089	CF090	CF091	CF092	Add-on
SERIES QMS533				
CF080	CF081	CF082	CF083	Starter
CF097	CF098	CF099	CF100	Add-on
SERIES QMS531				
CF188	CF185	CF186	CF187	Starter
SERIES QMS516				
*CF189				Starter
SERIES QMS543				
CF193	CF190	CF191	CF192	Starter

* Mixed colors

SERIES QMS531

- 27-QMS531 open hopper bins
- 10 heavy-duty grey enamel shelves

CF187



SERIES QMS532

- 21 QMS532 open hopper bins
- 8 heavy-duty grey enamel shelves

CF074



SERIES QMS533

- 15 QMS533 open hopper bins
- 6 heavy-duty grey enamel shelves

CF081



SERIES QMS516

- 4-QMS543-red, 3-QMS533-blue, 6-QMS532-yellow and 3-QMS531-blue open hopper bins
- 7 heavy-duty grey enamel shelves

CF189



SERIES QMS543

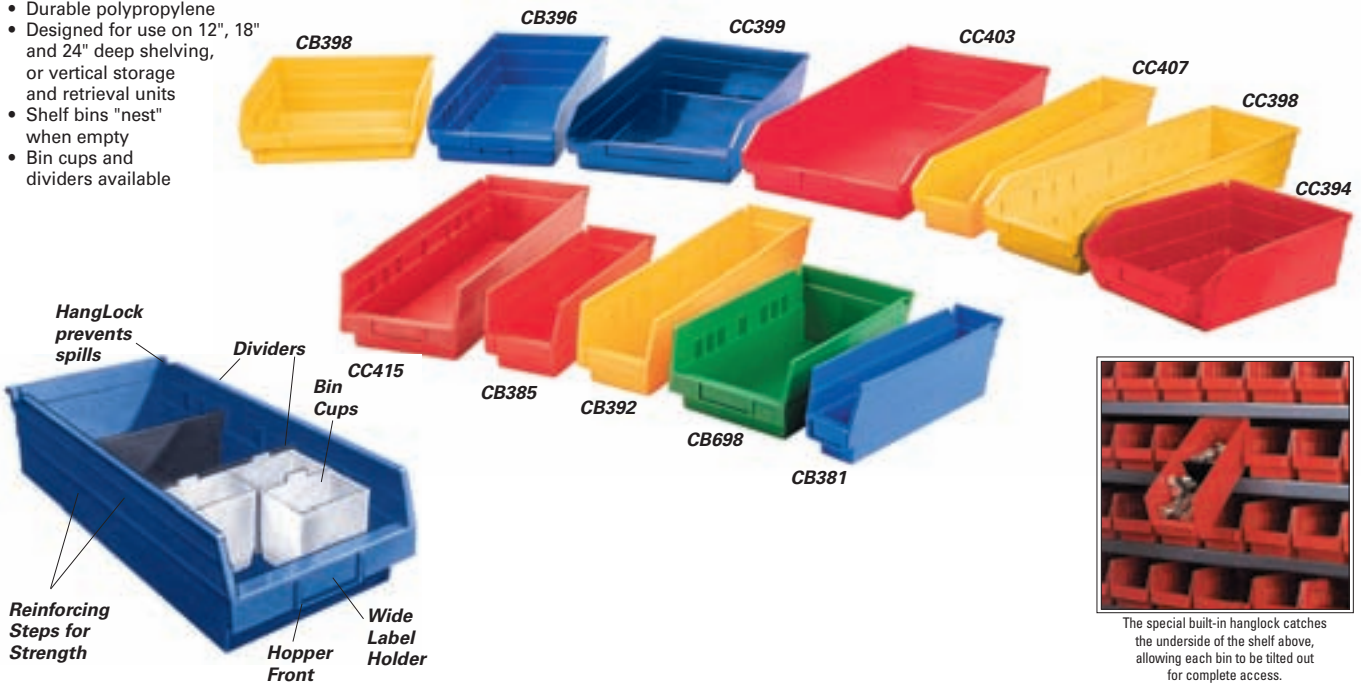
- 10-QMS543 open hopper bins
- 6 heavy-duty grey enamel shelves

CF193



PLASTIC SHELF BINS

- Economical way to store and display parts and components
- Durable polypropylene
- Designed for use on 12", 18" and 24" deep shelving, or vertical storage and retrieval units
- Shelf bins "nest" when empty
- Bin cups and dividers available



The special built-in hanglock catches the underside of the shelf above, allowing each bin to be tilted out for complete access.

Blue	Bin Model No.	Yellow	Green	Mfg. No.	Outside Dimensions L" x W" x H"	Inside Dimensions L" x W" x H"	Qty /Case	Dividers, up to 7 per bin	Bin Cups Per Bin	CD041
Red	Yellow	Green						CB379	CB380	CD036
CB381	CB382	CB383	CB696	30-110	11 5/8 x 2 3/4 x 4	10 1/4 x 1 5/8 x 4	24	N/A	N/A	N/A
CB384*	CB385*	CB386*	CB697*	30-120	11 5/8 x 4 1/8 x 4	10 1/4 x 3 x 4	24	CB420	5	2
CB393*	CB394*	CB395*	CB698*	30-130	11 5/8 x 6 5/8 x 4	10 1/4 x 5 1/2 x 4	12	CB421	9	4
CC393	CC394	CC395	N/A	QSB107	11 7/8 x 8 1/8 x 4	10 3/4 x 7 1/2 x 3 7/8	20	CB867	N/A	N/A
CC396	CC397	CC398	N/A	QSB109	11 7/8 x 11 1/8 x 4	10 3/4 x 10 3/8 x 3 7/8	8	CB869	N/A	N/A
CB390*	CB391*	CB392*	CB699*	30-128	17 7/8 x 4 1/8 x 4	16 1/2 x 3 x 4	12	CF021	8	3
CB396*	CB397*	CB398*	CB700*	30-138	17 7/8 x 6 5/8 x 4	16 1/2 x 5 1/2 x 4	12	CF022	15	6
CC399	CC400	CC401	N/A	QSB108	17 7/8 x 8 1/8 x 4	16 1/2 x 7 1/2 x 3 7/8	10	CB867	N/A	N/A
CC402	CC403	CC404	N/A	QSB110	17 7/8 x 11 1/8 x 4	16 3/8 x 10 3/8 x 3 7/8	8	CB869	N/A	N/A
CC405	CC406	CC407	N/A	QSB105	23 7/8 x 4 1/8 x 4	22 1/4 x 3 1/4 x 3 7/8	8	CB861	N/A	N/A
CC408	CC409	CC423	N/A	QSB106	23 7/8 x 6 5/8 x 4	22 1/4 x 5 1/2 x 3 7/8	8	CB862	N/A	N/A
CC411	CC412	CC413	N/A	QSB114	23 7/8 x 8 1/8 x 4	22 1/4 x 7 1/2 x 3 7/8	6	CB867	N/A	N/A
CC414	CC415	CC416	N/A	QSB116	23 7/8 x 11 1/8 x 4	22 1/4 x 10 3/8 x 3 7/8	6	CB869	N/A	N/A

* 2 full width adjustable/removable dividers included

BIN DIVIDERS

Model No.	Mfg. No.	Description	Qty/case
CF021	40-128	Divider, 3" wide	24
CF022	40-138	Divider, 5 1/2" wide	24
CB867	DSB107	Divider, 8 1/8" wide	50
CB869	DSB109	Divider, 11 1/8" wide	50
CB861	DSB101	Divider, 4 1/8" wide	50
CB862	DSB102	Divider, 6 5/8" wide	50
CB420	40-120	Divider, 3" wide	24
CB421	40-130	Divider, 5 1/2" wide	24

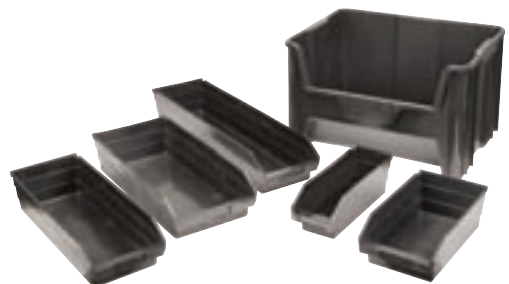
BIN CUPS

Model No.	Mfg. No.	Colour	Description
CB379	30-101	White	Bin cup, 3 1/4" x 2"
CB380	30-102	White	Bin cup, 5" x 2 3/4"
CD036	QBC111	Yellow	Bin cup, 3 1/4" x 1 3/4"
CD041	QBC112	Yellow	Bin cup, 5 1/8" x 2 3/4"

RECYCLED SHELF BINS

- Manufactured from recycled 100% post consumer, high density polyethylene
- Available in black only

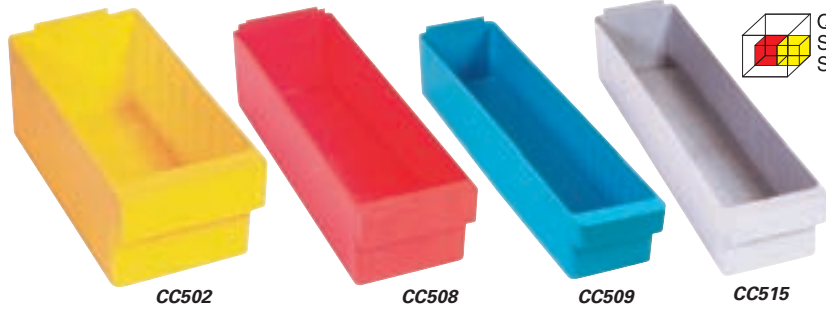
Model No.	Mfg. No.	Outside Dimensions L" x W" x H"	Inside Dimensions L" x W" x H"	Qty /Case	Wt. lbs.	Dividers Model No.
CB850	QSB 101 BR	11 7/8 x 4 1/8 x 4	10 3/4 x 3 1/4 x 3 7/8	36	0.41	CB861
CB851	QSB 102 BR	11 7/8 x 6 5/8 x 4	10 3/4 x 5 1/2 x 3 7/8	30	0.53	CB862
CB954	QSB 104 BR	17 7/8 x 6 5/8 x 4	16 1/2 x 5 1/2 x 3 7/8	20	0.9	CB862
CB854	QSB 105 BR	23 7/8 x 4 1/8 x 4	22 1/4 x 3 1/4 x 3 7/8	16	0.94	CB861
CB855	QSB 106 BR	23 7/8 x 6 5/8 x 4	22 1/4 x 5 1/2 x 3 7/8	8	1.5	CB862
CB857	QSB 108 BR	17 7/8 x 8 1/8 x 4	16 1/2 x 7 1/2 x 3 7/8	10	1.2	CB867
CB860	QSB 114 BR	23 7/8 x 8 1/8 x 4	22 1/4 x 7 1/2 x 3 7/8	6	1.5	CB867
CC304	QSB 116B	23 7/8 x 11 1/8 x 4	22 1/4 x 10 3/8 x 3 7/8	6	2.0	CB869
CC241	QGH 700 BR	15 1/4 x 19 7/8 x 12 7/16	-	3	13	N/A



STORAGE BINS

EURO DRAWERS

- Heavy-duty design for efficient organization of heavy parts, supplies, tools or equipment
- Injection moulded from virgin grade high-impact polystyrene
- 12-gauge thick wall
- Completely waterproof
- Oil and chemical-resistant
- Smooth front curved pull handle has ample room for pressure sensitive identification labels or bar codes
- Front handle has 3/4" opening
- Full width back ledge ensures spill free use



Model No.	Series	Colour	Outside Dimensions			Inside Dimensions			Qty /Case	Divider Model No.
			L"	x W"	x H"	L"	x W"	x H"		
CC501	QED601	Blue	11 5/8	x 5 9/16	x 4 5/8	10 9/16	x 5 3/16	x 4 3/8	24	CC517
CC502	QED601	Yellow	11 5/8	x 5 9/16	x 4 5/8	10 9/16	x 5 3/16	x 4 3/8	24	CC517
CC503	QED601	Grey	11 5/8	x 5 9/16	x 4 5/8	10 9/16	x 5 3/16	x 4 3/8	24	CC517
CC504	QED601	Red	11 5/8	x 5 9/16	x 4 5/8	10 9/16	x 5 3/16	x 4 3/8	24	CC517
CC505	QED602	Blue	17 5/8	x 5 9/16	x 4 5/8	16 9/16	x 5 3/16	x 4 3/8	24	CC517
CC506	QED602	Yellow	17 5/8	x 5 9/16	x 4 5/8	16 9/16	x 5 3/16	x 4 3/8	24	CC517
CC507	QED602	Grey	17 5/8	x 5 9/16	x 4 5/8	16 9/16	x 5 3/16	x 4 3/8	24	CC517
CC508	QED602	Red	17 5/8	x 5 9/16	x 4 5/8	16 9/16	x 5 3/16	x 4 3/8	24	CC517
CC509	QED603	Blue	23 7/8	x 5 9/16	x 4 5/8	22 3/4	x 5 3/16	x 4 3/8	12	CC517
CC510	QED603	Yellow	23 7/8	x 5 9/16	x 4 5/8	22 3/4	x 5 3/16	x 4 3/8	12	CC517
CC511	QED603	Grey	23 7/8	x 5 9/16	x 4 5/8	22 3/4	x 5 3/16	x 4 3/8	12	CC517
CC512	QED603	Red	23 7/8	x 5 9/16	x 4 5/8	22 3/4	x 5 3/16	x 4 3/8	12	CC517
CC513	QED604	Blue	17 5/8	x 3 3/4	x 4 5/8	16 9/16	x 3 1/2	x 4 3/8	24	CC518
CC514	QED604	Yellow	17 5/8	x 3 3/4	x 4 5/8	16 9/16	x 3 1/2	x 4 3/8	24	CC518
CC515	QED604	Grey	17 5/8	x 3 3/4	x 4 5/8	16 9/16	x 3 1/2	x 4 3/8	24	CC518
CC516	QED604	Red	17 5/8	x 3 3/4	x 4 5/8	16 9/16	x 3 1/2	x 4 3/8	24	CC518

Add dividers to Euro Drawers for additional storage possibilities!



EURO DRAWER CLOSED SHELF UNITS

- 13 heavy-duty grey enamel shelves
- Capacity: 630 lbs. per shelf
- Shipped knocked down

INCLUDES:

- 72 QED601 Series Euro drawers
- Dimensions: 36" W x 12" D x 76" H

- 108 QED604 Series Euro drawers
- Dimensions: 36" W x 18" D x 76" H

Model No.					No. of
Blue	Yellow	Grey	Red	Description	Shelves
CF102	CF103	CF104	CF105	Starter	13
CF159	CF160	CF161	CF162	Add-On	13

Model No.					No. of
Blue	Yellow	Grey	Red	Description	Shelves
CF110	CF111	CF112	CF113	Starter	13
CF167	CF168	CF169	CF170	Add-On	13

- 72 QED602 Series Euro drawers
- Dimensions: 36" W x 18" D x 76" H

- 72 QED603 Series Euro drawers
- Dimensions: 36" W x 24" D x 76" H

CF106	CF107	CF108	CF109	Starter	13
CF163	CF164	CF165	CF166	Add-On	13

CF114	CF115	CF116	CF117	Starter	13
CF171	CF172	CF173	CF174	Add-On	13



STACK-N-NEST® STORAGE BINS

- Great for storing, assembling and transporting small parts, components and finished goods
- Designed for maximum efficiency and utility
- Set together one way they stack and the other way they nest
- May be used on shelving or stacked up
- Heavy-duty design allows higher stacking
- In the plant, use the same bin for storage, handling, and assembly, no need to transfer contents



Model No.	Colour	Outside Dimensions			Wt. lbs.
		L"	x W"	x D"	
CC890	Blue	15 1/4	x 12 1/4	x 6	2
CC891	Red	15 1/4	x 12 1/4	x 6	2
CC892	Yellow	15 1/4	x 12 1/4	x 6	2