

GOGGLES & CLOTHING

FLEXIBLE FRAME GOGGLES

- Soft PVC frame seals out light leaks
- Choice of 2" x 4 1/4" fixed front or flip front design
- Comes complete with shade 5 lens

NT646



NT647



Model No.	Description
NT646	Fixed Front
NT647	Flip Front



LAVA BROWN LEATHER ACCESSORIES

- Designed to allow even weight distribution on the user to reduce fatigue
- Heat and flame resistant leather is made from durable side split cowhide



Model No.	Size
A. SLEEVE	
644-7023	23" L
B. CAPE SLEEVES	
644-7800S	Small
644-7800M	Medium
644-7800L	Large
644-7800XL	X-Large
644-7800XXL	2X-Large
644-7800XXX	3X-Large
C. BIBS	
644-7814	14" L
644-7820	20" L
D. SPLIT LEG APRONS & CHAPS	
644-7242	42" L
644-7248	48" L
644-7440	Chaps
E. BIB APRONS	
644-7124	24" L
644-7136	36" L
644-7142	42" L
644-7148	48" L
F. SPATS	
644-7106	6" L
644-7114	14" L



CUP GOGGLES

- Rigid 2" (50 mm) round lens cup goggle
- Comes complete with shade 5 lens



Model No.	Description
NT648	Cup Goggles

FLAME RETARDANT CLOTHING

- Manufactured from flame retardant treated cotton sateen
- Will retain its flame retardant properties for up to 50 normal washings
- Specially-designed underarm sport cut and hemmed collar
- 9-oz. jackets include inside pocket and five snaps
- 9-oz. cape sleeves come with six-snap fasteners for bib (sold separately)



Model No.	Size	Chest Measurements
-----------	------	--------------------

JACKETS

630-6130M	Medium	40-42"
630-6130L	Large	44-46"
630-6130XL	X-Large	48-50"
630-6130XXL	2X-Large	52-54"
630-6130XXX	3X-Large	56-58"

CAPE SLEEVES

630-6228M	Medium	40-42"
630-6228L	Large	44-46"
630-6228XL	X-Large	48-50"
630-6228XXL	2X-Large	52-54"
630-6228XXXL	3X-Large	56-58"

BIB & SLEEVES

630-6220	20" Length Bib	-
630-7318	18" Long Sleeve	-
630-7323	23" Long Sleeve	-

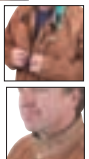


LAVA BROWN LEATHER JACKETS

- Designed to allow complete body movement and freedom
- Heat and flame resistant leather is made from durable side split cowhide
- Seams are double lock stitched
- Include full-sized pocket and multiple-snap adjustment cuffs
- Roll-up collar stops shooting spatter



Model No.	Size	Chest Measurements
644-7300M	Medium	40-42"
644-7300L	Large	44-46"
644-7300XL	X-Large	48-50"
644-7300XXL	2X-Large	52-54"
644-7300XXXL	3X-Large	56-58"



CLOTHING

LIMITED USE GENERAL PROTECTION COVERALLS

Manufactured of 1.8 oz/yd or 60 gm/m, SMS (spunbonded-meltdown spunbonded) material that provides protection against many dry particulates. The breathable material is comfortable and cool to wear while still protecting the user. Meets or exceeds ANSI 101 - 1996 sizing requirements and CE category 1 general protective clothing. Available in white and navy.



White Model No.	Navy Model No.	Garment Style	Size	Qty/Case
SAN822	SAN828	Hooded	Medium	25
SAN823	SAN829	Coverall	Large	25
SAN824	SAN830	w/elastic	X-Large	25
SAN825	SAN831	wrists and	2X-Large	25
SAN826	SAN832	ankles	3X-Large	25
SAN827	SAN833		4X-Large	25



TYVEK® CLOTHING

Tyvek® spun bonded olefin is a unique, non-woven material. Resistant to penetration, Tyvek® is chemically and biologically inert, low-linting and static-free until laundered. Available in white hooded coveralls with elastic wrists and ankles. Case qty: 25

Applications: Asbestos removal, paint spraying, light splashes, maintenance, general clean-up, dry particulate protection. Serged seams.

Model No.	Size	Model No.	Size
SA169	Small	SA170	X-Large
SA168	Medium	SA171	2X-Large
SA167	Large	SC202	3X-Large
		SC203	4X-Large



MICROMAX® NS COVERALLS

- General purpose protective clothing
- Can be used in non-hazardous environments where dirt, splashes and spills are present
- MicroMax® NS is economical, lightweight and is strong both wet or dry
- Breathable material for greater comfort
- Comes with elastic wrists and ankles
- Colour: White



Coverall Model No.	Hooded Coverall Model No.	Size	Qty /Case
SAN796	SAN803	Small	25
SAN797	SAN804	Medium	25
SAN798	SAN805	Large	25
SAN799	SAN806	X-Large	25
SAN800	SAN807	2X-Large	25
SAN801	SAN808	3X-Large	25
SAN802	SAN809	4X-Large	25

Hooded Coverall



BLUE DENIM APRON

Bib-style carpenter's apron measures 27" x 34". Blue denim with sewn on ties. Comes with one top pocket with pencil holder and 3 waist pockets.



Model No.	Description
SB911	Denim



STORM

DURABLE LIGHTWEIGHT NYLON/PVC RAINSUITS

- Double lapped, taped, ultrasonically welded and sewn seams
- Jacket comes with zipper front, large storm flap, two pockets with Velcro® closure
- Front and back vents on jacket along with inner mesh back lining provides improved ventilation
- Sleeve design provides maximum freedom of movement
- Bib overall pants are designed with heavy duty quick release fasteners, adjustable suspenders and Velcro® fly closure
- Velcro® and zipper leg closure for generous opening over work boots
- Zippered hood with drawstrings also converts into storage pouch for rain suits



Model No.						
Small	Medium	Large	X-Large	2X-Large	3X-Large	
SG869	SG870	SG871	SG872	SG873	SG874	Yellow
SG875	SG876	SG877	SG878	SG879	SG880	Green
SG881	SG882	SG883	SG884	SG885	SG886	Hi Viz Orange

TORNADO

ECONOMY RAINSUITS

- 0.35 mm material thickness
- Ultrasonically welded seams
- Jacket comes with storm flap, dome snaps, two patch pockets, corduroy collar and detachable hood
- Cape back and underarm vents
- Bib overall pants features non-conductive fasteners fly front and adjustable suspenders
- Ankle and cuff take-up snaps
- Adjustable waist snaps
- Available in yellow and orange PVC/Polyester/PVC
- Generous sizing

Model No.	Size	Model No.	Size
SG851	Small	SG854	X-Large
SG852	Medium	SG855	2X-Large
SG853	Large	SG856	3X-Large



POLYPROPYLENE DELUXE SERIES COVERALLS

Breathable, non-irritating to the skin & durable lightweight polypropylene material which can be reused. Suit can be laundered or dry-cleaned. It creates a soil barrier for protection from dust, dirt and other particles in the air. Resistant to aqueous liquid splashes, acids, mildew, abrasion, stain and bacteria. It is also a non-flammable product. Available in standard coverall zipper closure or a coverall with hood. Hooded coveralls available with elastic at wrists and ankles. 2.1 oz. fabric weight. Colour: Light Blue.

Coverall Model No.	Hooded Coveralls Model No.	Size	Qty /Case
SC875	SC880	Small	15
SC876	SC881	Medium	15
SC877	SC882	Large	15
SC878	SC883	X-Large	15
SC879	SC884	2X-Large	10



Coverall



NEOPRENE ON NYLON APRON

Resists most acids, protects against splashes. Bib-style apron measures 36" x 48". Lightweight 9 oz. neoprene on nylon. Sewn-on ties. Colour: Yellow



Model No.	Description
SA277	Neoprene

