

OUTFITS & TORCH KITS

EXCALIBUR WELDING AND CUTTING OUTFIT

- Designed for all trades
- Welds up to 1/4" and cuts up to 1"
- 20' twin hoses
- *Harris® Steel Worker™* Classic compatible
- **Includes:** Torch handle (442T), cutting attachment (442C), regulators (452X-80/452Y-15), cutting tip (472C-1), mixer (472M), welding elbows (472W-3/-5/-7), twin hoses, goggles, striker, plastic case

Model No. 331-1885
Mfg. No. 4120



TOTE-A-TORCH WELDING AND CUTTING OUTFIT

- Light-to-medium duty portable outfit
- Weld up to 3/16" and cuts up to 1/2"
- Rear entry regulators for better balance
- Acetylene regulator has an "MC" (CGA 200) inlet connection; oxygen regulator has standard CGA 540 connection
- 12.5' twin hoses
- *Victor®* portable torch or *Super Range®* compatible
- **Includes:** Torch handle (142T), cutting attachment (142C), regulators (210X-80/210Y-15), cutting tip (172C-0), welding nozzle (172W-1), twin hoses, goggles, striker, plastic carrier, one "MC" acetylene cylinder, one "R" oxygen cylinder

Model No 331-1070
Mfg. No. 12-PTC



AIR-ACETYLENE FEATHER FLAME® TORCH KITS

- Screw-in style
- Feather brush flame
- Interchangeable screw-in tips
- Heavy-duty torch
- UL listed brass regulator
- **Includes:** 12' hose, handle, lighter and wrench

330-1663



Model No.	MFG. No.	Tip No.	Reg. FTG
330-1663	KA-1H	BA-3	"B" Cylinder
330-1669	KA-2H	BA-3	"MC" Cylinder

LIGHT/MEDIUM DUTY WELDING & CUTTING OUTFIT

- Comes with check valves
- Welds up to 3/16", cuts up to 1/2"
- *Victor®* compatible

Model No 331-3025
Mfg. No. 21B-1SPCV



HOTSPOTTER ALL PURPOSE STANDARD DUTY PROPANE TORCH KIT

- All purpose propane flame tool operates off of the pressure of a standard propane tank-no regulator required
- Appropriate for a wide variety of all-season maintenance/repair applications at commercial offices, factories, institutions, warehouses, parks, residential properties, farms and parking lots
- Burns weeds, repair asphalt, seal tar, peel paint, remove road markings, melt ice, and thaw pipes
- Comes with durable 10' neoprene hose, accurate brass flow control shut-off valve and delivers 500,000 BTU
- Standard kit has a welded tube nozzle and comes with striker
- Meets NFPA 51 specifications

Model No. TTU073 Mfg. No. WB-102



GAS CYLINDER CABINETS

- Heavy-duty construction
- 2" x 2" 10-gauge formed steel angle posts
- 9-gauge wire mesh doors and walls for venting
- 14-gauge checker plate shelves and roof
- English and French warning labels included
- Padlock hasp for added security
- Innovative door design allows for left or right opening installation
- Easy assemble, knock-down feature saves on shipping costs



SAF837



SAF847



OXYGEN GAS (9" DIAMETER CYLINDERS)

Model No.	H"	x	W"	x	D"	Cylinder Capacity	Wt. lbs.
SAF837	74	x	44	x	30	10	210
SAF848*	74	x	88	x	30	20	420

*Consists of two units of the SAF837

LIQUID PROPANE (35 LB CYLINDERS)

Model No.	H"	x	W"	x	D"	Cylinder Capacity	Wt. lbs.
SAF836	37	x	44	x	30	6	135
SAF847	74	x	44	x	30	12	270

Notes: Constructed to meet or exceed strict CSA International B149.2-0 Propane Storage and Handling Code must be stored vertically at all times.

WELDING TOOLS & ACCESSORIES

CAM ACTION CABLE CONNECTORS

- Fits cable sizes 4 through 4/0
- Manufactured from heavy wall precision machined brass alloy
- Brass body assembly slides into heavy-duty neoprene insulator with no external screws
- Compatible with most common brands



Model No.	Description
NT664	Male/Female Connector Set
NT649	Male Half with Insulator
NT650	Female Half with Insulator



INDUSTRIAL-DUTY SCRATCH BRUSHES

- Wood handle
- Choice of carbon or stainless steel bristles

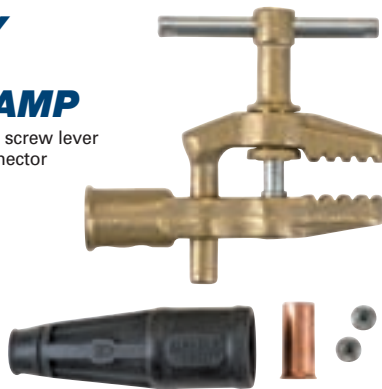


Model No.	Bristles	Rows
LONG HANDLE BRUSHES		
WN994	Carbon Steel	3 x 19
NT608	Carbon Steel	4 x 19
NT611	Stainless Steel	3 x 19
NT612	Stainless Steel	4 x 19
SHOE HANDLE BRUSHES		
708-1030	Carbon Steel	3 x 16
708-1040	Carbon Steel	4 x 16
708-1070	Stainless Steel	3 x 16
708-1080	Stainless Steel	4 x 16
"TOOTHBRUSH" CLEANING BRUSH		
NT615	Stainless Steel	3 x 7

HEAVY-DUTY "C-STYLE" GROUND CLAMP

- C-type jaws are adjusted by screw lever
- Rubber insulated cable connector
- 600 amps

Model No. NP527

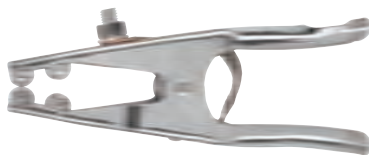


GROUND CLAMPS

- Manufactured from nickel-plated steel with forged brass conductors
- Heavy-duty springs provide positive strength at jaws
- BZ947 ideal for farm and light shop work
- NT662 for portable gas driven welders, fully insulated hinge and spring prevents arcing



Model No.	Amps
BZ947	300
NT662	500



HEAVY-DUTY GROUND CLAMPS

- Manufactured from heavy-duty nickel-plated steel
- Forged brass conductors and braided copper strap
- Heavy-duty spring provides positive contact at jaws
- Includes Allen wrench



Model No.	Amps
NT668	300
NT669	500



SHORTSTUB™ ELECTRODE HOLDERS

- Manufactured from copper alloy for maximum conductivity and strength
- Fibreglass insulators are designed to withstand intense heat and impact



Model No.	Description	Amps
NT629	Shortstub™ w/Neck Ring	400
NT631	Shortstub™ w/Neck Ring	600
NT630	Slimline – Bernard® Style	400

WELDING TOOLS & ACCESSORIES

CHIPPING HAMMER

- Cone and chisel head
- Spring steel handle
- Overall length: 10 1/2"
- Head length: 6 1/4"

Model No. NP532



MULTI-PURPOSE MIG PLIERS

- Eight-way pliers
- Nickel plated finish
- Ideally suited for removal of hot spatter from nozzle ends, as well as many other uses



Model No.	Description
NP537	Pliers
NP538	Holster for pliers

FLINT LIGHTERS

- Choice of single or tri-flint lighters
- Additional flints sold separately

NT642



710-1025



NT224



710-1040



Model No.	Mfg. No.	Description
NT642	WM2001	Single Flint Lighter
710-1025	WM2001X	Flints, 5 per Holder
NT224	WM4501	Tri Flint Lighter
710-1040	WM5001X	Flints - each

24 OZ. FIBERGLASS LAVASHIELD™ WELDING BLANKETS

- 24 oz. black fiberglass with neoprene coated both sides
- Hemmed on all sides with Kevlar® thread that has been double-locked stitched
- Large brass grommets added for extra durability and easy handling
- Temperature resistant: 1000°F (538°C)

Applications: Heavy-duty vertical curtain protection against sparks, molten metal splash, welding spatter and grinding spray. General purpose drop cloth for protection against welding spatter.

Model No.	Dimensions*
NT896	6 x 6
NT821	6 x 8



SPIRAL TIP CLEANERS

- Cleaning data on back of case
- Hardened steel file included in each case
- Choice of Standard or extra long King set
- Quality aluminum case
- Includes 12 cleaners



Model No.	Description
NT222	Standard Set
NT221	King Set

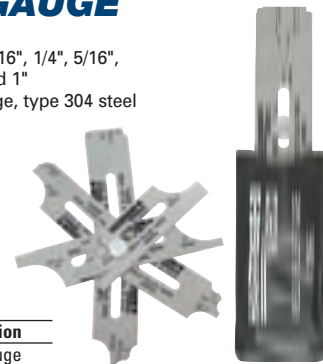


WELD FILLET GAUGE

- Precision gauge
- Covers eleven sizes from 1/8", 3/16", 1/4", 5/16", 3/8", 7/16", 1/2", 5/8", 3/4", 7/8" and 1"
- Constructed of rust proof 22 gauge, type 304 steel
- Die blanked to eliminate sharp edges - adds to accuracy
- Permanently etched and black filled lettering for long life and abrasion resistance



Model No.	Mfg. No.	Description
704-5015	MWFG	Fillet Gauge



COMBOFRAME ADJUSTABLE MODULAR WELDING SCREENS

FRAMES

- Innovative COMBOframe combines high durability with extreme versatility
- Assembles in less than 5 minutes, no tools required
- Adjustable to fit both 6-foot and 8-foot-wide welding screens
- Made with heavy-duty finished steel tubing and connects with spring-pins
- Includes 360° swivel connectors that allow various configurations

LAVASHIELD™ CURTAIN

- Specially formulated 16 mil thick vinyl
- Grommets every 12" interval
- Screen edges are hemmed with DuPont® Kevlar® stitching
- Resists to UV rays, flame and abrasion
- Sold per panel



Green Olive Drab



Yellow Orange



Model No.	Dimensions	UV Transparency	UV Resistance	Colour	Curtain Only
NT888	6 x 6	High	Moderate	Yellow	NT826
NT889	8 x 6	High	Moderate	Yellow	NT827
NT890	6 x 6	High	Moderate	Orange	NT828
NT891	8 x 6	High	Moderate	Orange	NT829
NT892	6 x 6	Moderate	Moderate	Green	NT830
NT893	8 x 6	Moderate	Moderate	Green	NT831
NT894	6 x 6	Opaque	Maximum	Olive Drab	NT832
NT895	8 x 6	Opaque	Maximum	Olive Drab	NT833

FRAME ONLY

Model No.	Description
NT834	Modular Frame, Adjustable width 6' or 8'

WELDING HELMETS

P250 SERIES WELDING HELMETS

- A new generation of welding helmets!
- Lightweight, balanced flame resistant nylon helmet shell
- Telescopic, fully adjustable headgear
- Front loading filter and cover plate
- Choice of passive shade 10 lens, single shade, or variable-shade auto-darkening filters
- **Single shade:** 3-light, 10-dark, with 1.93" x 3.86" viewing area and 2 sensors
- **Variable shade:** 3-light, variable 9-13 - dark, with 1.93" x 3.86" viewing area
- "Light Guide" sensory technology on the variable shade model virtually eliminates sensor block
- Solar powered with replaceable batteries
- ANSI Z87, CSA Z94
- 2 year warranty on ADF



TTU054



TTU055



TTU053



Model No.	Mfg. No.	Shade	Colour
TTU053	K2500	Passive Shade 10	Metallic Black
TTU054	K2501	Single Shade	Metallic Red
TTU055	K2502	Variable Shade	Metallic Red

FMX™ WELDING HELMETS

- Professional, full-wrap, heat and scratch-resistant graphics
- Superior ADF lens
- ADF shade control: 9-13
- Viewing area: 7 sq.in.
- Solar powered
- Proven "3-C" headgear for all day comfort
- Lightest-weight, full-size helmet available
- Meets ANSI and CSA standards
- 2-year warranty on ADF
- Limited lifetime warranty on helmet shell and headgear

SAQ809



SAQ811



SAQ810

Model No.	Mfg. No.	Description
SAQ809	2999BV913X1	"Flame" graphics
SAQ810	2999BV913X2	"Demon" graphics
SAQ811	2999BV913X3	"Wire Burner" graphics

SPERIAN SATELLITE™ OSE HELMET

- Widest field of vision of any helmet
- ADF technology is combined with easily accessible external controls to eliminate the need for helmet removal
- Shell profile channels fumes away, extended coverage protects chest, neck and ears
- Variable shade selection of 5 through 13 with infinite potentiometer adjustment
- Grinding mode setting
- Sensitivity control to match application
- Delay switch to control dark to light switch time
- Power supply: Solar cells
- 2-year warranty on ADF cartridge



Model No.	Mfg. No.	Colour
SAJ752	K600	Charcoal
SAJ753	K601	Blue
SAJ754	K602	Silver



SPERIAN OSC™ HELMET

- External shade level adjustment from 9-13 with infinite potentiometer adjustment
- Delay switch to adjust switching speed
- Sensor bar eliminates peripheral light interference
- 2-year warranty on cartridge



Model No.	Mfg. No.	Colour
SAJ755	K550	Black

HELMET PADS & SWEATBANDS

- Field-tested to improve helmet grip with maximum perspiration absorption
- Helmet pads are flame retardant for added safety
- Made of an absorbent air-cushioned layer lined with 10% fleece cotton
- Velcro fastening system is designed to fit all major brands of headgear
- Sweatbands come with elastic strap
- Sold per package of 2



Non-suspender headgear



Suspender headgear



Sweatbands

Model No.	Description
620-3100V	Non-Suspender Pads For Use With Welding Helmets
620-3200V	Suspender Pads For Use With Hard Hats
SAM548	Sweatbands

WELDING HELMETS

- Lightweight design with ratchet headgear
- Comes complete with shade 10 lens
- Choice of 2" x 4 1/4" flip front or 4 1/2" x 5" wide vision fixed front



SAJ528



SAJ527

Model No.	Size"	Description
SAJ527	2 x 4 1/4	Flip Front
SAJ528	4 1/2 x 5 1/4	Fixed Front

GOGGLES & CLOTHING

FLEXIBLE FRAME GOGGLES

- Soft PVC frame seals out light leaks
- Choice of 2" x 4 1/4" fixed front or flip front design
- Comes complete with shade 5 lens

NT646



NT647



Model No.	Description
NT646	Fixed Front
NT647	Flip Front



LAVA BROWN LEATHER ACCESSORIES

- Designed to allow even weight distribution on the user to reduce fatigue
- Heat and flame resistant leather is made from durable side split cowhide



Model No.	Size
-----------	------

A. SLEEVE

644-7023	23" L
----------	-------

B. CAPE SLEEVES

644-7800S	Small
644-7800M	Medium
644-7800L	Large
644-7800XL	X-Large
644-7800XXL	2X-Large
644-7800XXX	3X-Large

C. BIBS

644-7814	14" L
644-7820	20" L

D. SPLIT LEG APRONS & CHAPS

644-7242	42" L
644-7248	48" L
644-7440	Chaps

E. BIB APRONS

644-7124	24" L
644-7136	36" L
644-7142	42" L
644-7148	48" L

F. SPATS

644-7106	6" L
644-7114	14" L



CUP GOGGLES

- Rigid 2" (50 mm) round lens cup goggle
- Comes complete with shade 5 lens



Model No.	Description
NT648	Cup Goggles

FLAME RETARDANT CLOTHING

- Manufactured from flame retardant treated cotton sateen
- Will retain its flame retardant properties for up to 50 normal washings
- Specially-designed underarm sport cut and hemmed collar
- 9-oz. jackets include inside pocket and five snaps
- 9-oz. cape sleeves come with six-snap fasteners for bib (sold separately)



Model No.	Size	Chest Measurements
-----------	------	--------------------

JACKETS

630-6130M	Medium	40-42"
630-6130L	Large	44-46"
630-6130XL	X-Large	48-50"
630-6130XXL	2X-Large	52-54"
630-6130XXX	3X-Large	56-58"

CAPE SLEEVES

630-6228M	Medium	40-42"
630-6228L	Large	44-46"
630-6228XL	X-Large	48-50"
630-6228XXL	2X-Large	52-54"
630-6228XXXL	3X-Large	56-58"

BIB & SLEEVES

630-6220	20" Length Bib	-
630-7318	18" Long Sleeve	-
630-7323	23" Long Sleeve	-



LAVA BROWN LEATHER JACKETS

- Designed to allow complete body movement and freedom
- Heat and flame resistant leather is made from durable side split cowhide
- Seams are double lock stitched
- Include full-sized pocket and multiple-snap adjustment cuffs
- Roll-up collar stops shooting spatter



Model No.	Size	Chest Measurements
644-7300M	Medium	40-42"
644-7300L	Large	44-46"
644-7300XL	X-Large	48-50"
644-7300XXL	2X-Large	52-54"
644-7300XXXL	3X-Large	56-58"

