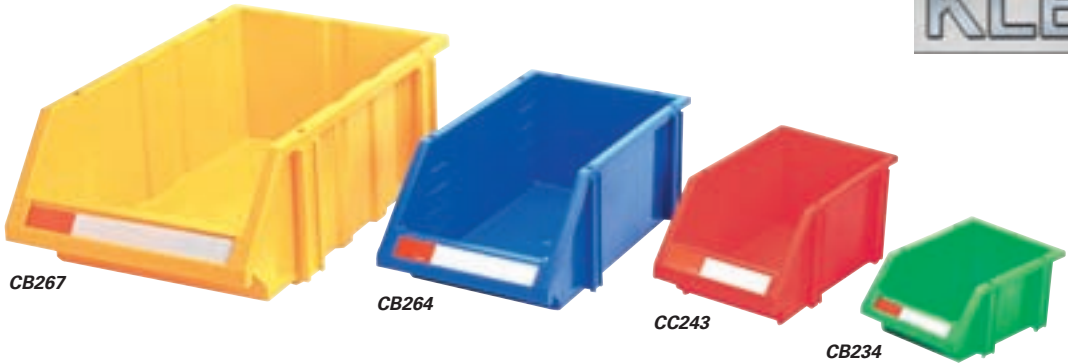


STORAGE BINS

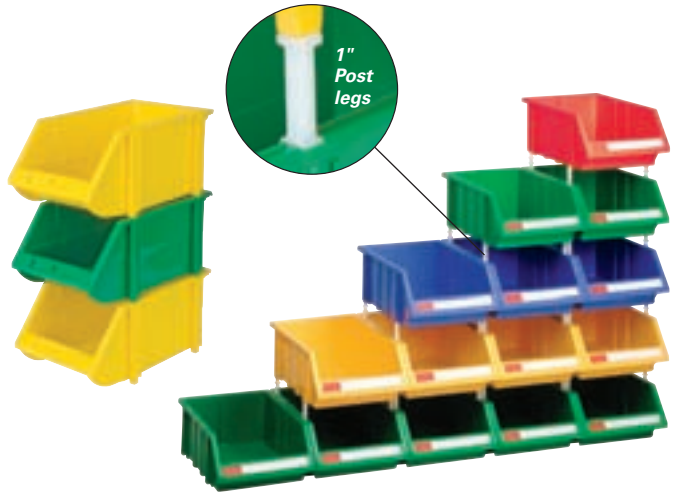
HI-STAK PLASTIC BINS



- Innovative stacking design allows for greater visibility and easier access to contents
- Are guaranteed unbreakable and distortion-free from -40°C to 120°C
- Unaffected by oil, alkaline and most acids
- Four 1" post-type legs allow stacking
- 1" of extra height between bins allows for easier access and greater visibility of bin contents
- Attach to each other's sides for a strong, more stable arrangement
- Ideal in production or for store display
- I.D. card with clear plastic shield provided with each bin

| Model No. | | | | Dimensions | | Wt. | Qty |
|-----------|--------|-------|-------|-------------------|-------------------|------|-------|
| Blue | Yellow | Green | Red | L" x W" x H" | L" x W" x H" | lbs. | /Case |
| CB260 | CB261 | CC234 | CC242 | 7.2 x 4.8 x 3.2 | 7.2 x 4.8 x 3.2 | 0.10 | 60 |
| CB262 | CB263 | CC235 | CC243 | 10.0 x 6.0 x 4.8 | 10.0 x 6.0 x 4.8 | 0.15 | 36 |
| CB264 | CB265 | CC236 | CC244 | 14.0 x 8.0 x 6.0 | 14.0 x 8.0 x 6.0 | 0.35 | 18 |
| CC239 | CC240 | CC237 | CC245 | 18.0 x 8.0 x 7.1 | 18.0 x 8.0 x 7.1 | 0.55 | 12 |
| CB266 | CB267 | CC238 | CC246 | 18.0 x 12.0 x 7.1 | 18.0 x 12.0 x 7.1 | 0.60 | 8 |

* Add 1 inch to overall height when stacking on legs.



GIANT STACKING CONTAINERS

- Designed for multiple applications in recycling, storing parts, tools and warehouse items
- Will stack up to 6 high creating sturdy, tall storage systems
- Large grip side handles
- Extra thick side walls with reinforcing ribs allow for 100 lbs. stack capacity per bin
- 1/4" drill holes in bottom allow for drainage
- Optional clear window and labels are available
- Outside dimensions : 15 1/4" L x 19 7/8" W x 12 7/16" H



| Model No. | | | | | Mfg. No. | Qty /case |
|-----------|-------|-------|-------|-------|----------|-----------|
| Grey | Blue | Ivory | Black | Red | | |
| CB838 | CB839 | CB841 | CB842 | CC305 | QGH700 | 3 |

GIANT STACK CONTAINER SHELF UNIT

- Includes 10 QGH700 storage bins and heavy-duty grey enamel shelves
- 42" W x 18" D x 76" H
- Capacity: 500 lbs. per shelf
- Shipped knocked down



| Model No. | | | | | Description | No. of shelves |
|-----------|-------|-------|-------|-------|-------------|----------------|
| Grey | Blue | Ivory | Black | Red | | |
| CF056 | CF057 | CF059 | CF060 | CF066 | Starter | 6 |
| CF061 | CF062 | CF064 | CF065 | CF067 | Add-On | 6 |

STACK-N-NEST CONTAINERS



STACK-N-NEST® PLASTIC CONTAINERS

- Polywilton® Stack-N-Nest® containers used in general manufacturing, food processing and distribution applications
- Injection moulded from high-impact polyolefins
- Will not rust, rot or corrode, resist damaging effects of oil, most chemical solvents, water and steam
- Stack without covers
- Nest at alternating 180° positions when empty
- Withstands wide temperature variances
- Easily cleaned



**BLUE & GREY BINS
ARE FDA & USDA APPROVED
FOR FOOD APPLICATIONS!**

CONTAINERS

| Model No. | | | Mfg. No. | Outside Dimensions Top | | | Outside Dimensions Bottom | | | Volume cu.ft. | Nesting Ratio | Wt. lbs. | COVERS | | |
|-----------|-------|-------|-----------|------------------------|-------------|--------------|---------------------------|------|-------|---------------|---------------|----------|--------|--|--|
| Grey | Red | Blue | | L" x W" x H" | L" x W" | L" x W" x H" | L" x W" | Grey | Red | | | | Blue | | |
| CA341 | CC859 | CC868 | SN2012-6 | 20.1 x 13.0 x 6.2 | 18.5 x 11.5 | 0.6 | 2.1:1 | 2.1 | CA334 | CC877 | CC883 | | | | |
| CA344 | CC860 | CC869 | SN2414-8 | 24.0 x 14.1 x 7.9 | 21.8 x 11.5 | 1.1 | 4:1 | 3.4 | CA337 | CC880 | CC886 | | | | |
| CA342 | CC861 | CC870 | SN2013-12 | 19.4 x 12.9 x 12.1 | 17.3 x 10.9 | 1.3 | 4:1 | 3.8 | CA335 | CC878 | CC884 | | | | |
| CA343 | CC862 | CC871 | SN2117-12 | 21.0 x 17.0 x 12.0 | 18.8 x 15.0 | 1.8 | 4:1 | 5.0 | CA336 | CC879 | CC885 | | | | |
| CA346 | CC863 | CC872 | SN2618-10 | 26.1 x 18.7 x 10.5 | 24.0 x 15.9 | 2.1 | 4:1 | 5.4 | CA339 | CC882 | CC888 | | | | |
| CA345 | CC866 | CC875 | SN2420-13 | 24.0 x 20.0 x 13.0 | 21.6 x 17.7 | 2.7 | 4:1 | 6.1 | CA338 | CC881 | CC887 | | | | |
| CA349 | CA867 | CC876 | SN3024-15 | 30.1 x 24.0 x 15.1 | 27.0 x 21.0 | 4.7 | 4.5:1 | 11.0 | N/A | N/A | N/A | | | | |

PLEXTON® CONTAINERS

- Fiberglass wire-reinforced rim containers
- Available also without wire
- Ideal solution for heavy-duty storage, work-in-process and distribution applications
- Can withstand temperatures as low as -60°F and as high as 250°F (continuous)
- Resistant to moisture, chemicals, solvents and most oils
- Capacity: 500 lbs. per container



CONTAINERS

| Model No. | | Outside Dimensions | | | Inside Dimensions | | | Qty /Case | COVERS | | DOLLIES |
|-----------|-------|--------------------|-------------|--------------|-------------------|-------|-------|-----------|-----------|------|---------|
| Red | Grey | Top | | | Top | | | | Red | Grey | |
| | | L" x W" x H" | L" x W" | L" x W" x H" | L" x W" | | | | Model No. | | |
| CD179 | CD193 | 17.9 x 10.8 x 5 | 15.9 x 10.1 | 10 | CD207 | CD216 | CD225 | | | | |
| CD180 | CD194 | 19.8 x 12.8 x 6 | 18.1 x 11.9 | 10 | CD208 | CD217 | CD226 | | | | |
| CD181 | CD195 | 20.6 x 13.0 x 8 | 18.0 x 12.3 | 10 | CD209 | CD218 | CD227 | | | | |
| CD182 | CD196 | 24.1 x 11.4 x 6.9 | 20.0 x 10.7 | 10 | CD210 | CD219 | CD228 | | | | |
| CD183 | CD197 | 24.1 x 11.4 x 9 | 20.0 x 10.6 | 10 | CD211 | CD219 | CD228 | | | | |
| CD184 | CD198 | 24.3 x 14.8 x 5.1 | 21.7 x 14.0 | 8 | CD211 | CD220 | CD229 | | | | |
| CD185 | CD199 | 24.3 x 14.8 x 8 | 21.5 x 13.9 | 8 | CD211 | CD220 | CD229 | | | | |
| CD186 | CD200 | 25.3 x 18.1 x 6.1 | 21.4 x 18.1 | 10 | CD212 | CD221 | CD230 | | | | |
| CD187 | CD201 | 25.3 x 18.1 x 10.1 | 22.8 x 17.3 | 5 | CD212 | CD221 | CD230 | | | | |
| CD188 | CD202 | 27.5 x 19.9 x 14.1 | 23.1 x 18.9 | 5 | CD213 | CD222 | CD231 | | | | |
| CD189 | CD203 | 29.6 x 13.8 x 7 | 26.7 x 12.9 | 10 | N/A | N/A | N/A | | | | |
| CD190 | CD204 | 30.6 x 16.9 x 11.1 | 26.3 x 15.9 | 5 | CD214 | CD223 | CD232 | | | | |
| CD191 | CD205 | 34.1 x 24.0 x 8.1 | 30.1 x 21.6 | 5 | N/A | N/A | N/A | | | | |
| CD192 | CD206 | 42.5 x 20.1 x 14.1 | 38.1 x 19.0 | 5 | CD215 | CD224 | CD233 | | | | |

PLASTIC BIN SUPPORT RACKS

- Louvered bin panels can be wall-mounted, attached to back of shelving, mounted on benches, carts, inside cabinets, fastened to slotted angle components or used for service truck interiors
- Bins are easily removed, refilled and replaced
- Each heavy-duty panel is 16 gauge cold-rolled steel
- Slotted holes 3/4" L x 3/8" W at 6" centres simplify installation
- *Kleton* grey powder coated
- **Installation Note:** Panels must be securely fastened to materials of adequate load bearing strength
- Each panel must be secured vertically at the centre

BIN QUANTITY TABLE

Quantity of identical plastic bins that fit Model CB362 Panel

| Combined Panel Height | Bin CB093 | Bin CB096 | Bin CB099 | Bin CB102 | Bin CB105 | Bin CB108 | Bin CB111 |
|-----------------------|-----------|-----------|-----------|-----------|-----------|-----------|-----------|
| 35 3/4" Wide | | | | | | | |
| 1 Panel = 19" H | 32 | 32 | 18 | 9 | 8 | 8 | 4 |
| 2 Panels = 37" H | 72 | 72 | 36 | 18 | 18 | 16 | 8 |
| 3 Panels = 55" H | 104 | 104 | 54 | 27 | 28 | 28 | 14 |
| 4 Panels = 73" H | 144 | 144 | 72 | 36 | 36 | 36 | 18 |

For CB361 Panel, use 1/2 of bin quantities shown above.

BIN CARTS

- Mobile bin cart has a work surface of 14 gauge steel
- Model **CB366** (shown) includes 16 **CB108** bins and 4 **CB111** bins
- 5" non marking casters
- Includes two **CB362** panels which accommodate various bin quantities, see chart above
- 38 1/2" L x 24" W x 37 1/2" H
- *Kleton* blue finish
- Shipped all-welded



CB366



| Model No. | Description | Dimensions W" x D" x H" | Wt. lbs. | | | |
|-----------|-------------|-------------------------|----------|-------|----------------------|-----|
| CB365 | Cart only | 24 x 38 1/2 x 36 1/2 | 95 | | | |
| Blue | Red | Yellow | Green | Stone | | |
| CB366 | CB367 | CB368 | CB689 | CB690 | 24 x 38 1/2 x 36 1/2 | 133 |

MOBILE BIN RACKS

- **CB359** single sided unit incorporates two **CB362** panels and 2 1/2" non marking casters
- **CB649** double sided unit incorporates six **CB362** panels and 5" non marking casters
- Ideal for transportation of small parts
- Model **CB090** (shown) includes 96 plastic bins of various sizes
- *Kleton* blue finish
- Shipped all-welded



CB090



| Model No. | Description | Rack Type | Dimensions W" x D" x H" | Wt. lbs. | | | |
|-----------|-------------|-----------|-------------------------|----------|--------|--------------|-----|
| CB359 | Rack only | Single | 36 x 16 x 46 | 60 | | | |
| CB649 | Rack only | Double | 36 x 24 x 63 | 120 | | | |
| Blue | Red | Yellow | Green | Stone | | | |
| CB650 | CB651 | CB652 | CB681 | CB682 | Single | 36 x 16 x 52 | 83 |
| CB089 | CB090 | CB091 | CB683 | CB684 | Double | 36 x 24 x 63 | 187 |

Model No.
CB362
Panel Only



| Model No. | Panel Size W" x H" | Wt. lbs. |
|-----------|--------------------|----------|
| CB361 | 18 x 19 | 6 |
| CB362 | 36 x 19 | 12 |



Customize it to your specifications. See page B56 for details

ACCESSORIES FOR PLASTIC BIN SUPPORT & BENCH RACKS

- Round and square hooks, constructed in sturdy steel
- Can be mounted on louvered panels
- *Kleton* blue finish



CC165



CC167

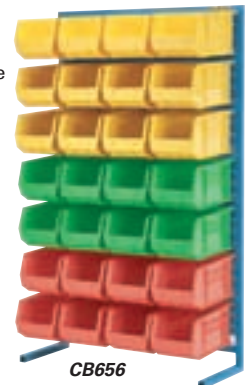
FOR LOUVERED PANEL

| Model No. | Description |
|-----------|------------------|
| CC165 | Round hook, 6" |
| CC166 | Round hook, 12" |
| CC167 | Square hook, 6" |
| CC168 | Square hook, 12" |



STATIONARY BIN RACKS

- Bin racks made of 1 1/4" square tube frame
- Shipped all-welded
- **CB373** stationary single-sided bin rack incorporates three model **CB362** panels
- See chart above for bin unit capacities
- **CB653** double sided bin rack incorporates 6 **CB362** panels
- Model **CB656** (shown) includes 28 **CB110** bins
- *Kleton* blue finish



CB656



| Model No. | Description | Rack Type | Dimensions W" x D" x H" | Wt. lbs. | | | |
|-----------|-------------|-----------|-------------------------|----------|--------|--------------|-----|
| CB373 | Rack only | Single | 36 x 12 x 61 | 60 | | | |
| CB653 | Rack only | Double | 36 x 24 x 61 | 100 | | | |
| Blue | Red | Yellow | Green | Stone | | | |
| CB654 | CB655 | CB656 | CB685 | CB686 | Single | 36 x 12 x 61 | 107 |
| CB370 | CB371 | CB372 | CB687 | CB688 | Double | 36 x 24 x 61 | 194 |

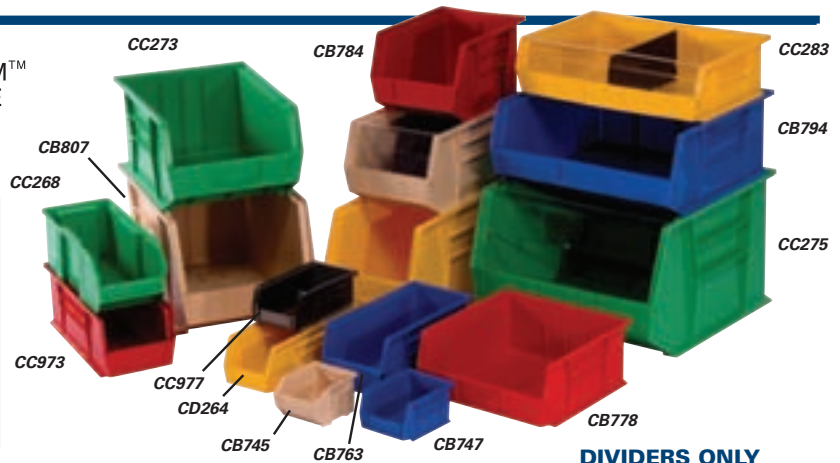
STORAGE BINS

QUANTUM™ BINS

- Heavy-duty, virgin, high density polypropylene/polyethylene
- Autoclavable up to 250°F
- Large multiple label slots
- Stackable
- Optional dividers and clear windows available for most units
- Hangs on louvered panels, rails and carts
- Jumbo bins can not hang on louvered panels or rail systems
- Jumbo bins have a stack capacity of up to 100 lbs. and can stack up to 6 bins high



**JUMBO 24" L
ULTRA BINS
(23 7/8"W)**



DIVIDERS ONLY

| Model No. (BINS) | | | | | | Mfg. No. | Outside Dim. | | | Qty /Case | Bin load Cap. lbs. | Length Model No. | Clear Window Model No. | | |
|------------------|-------|--------|-------|-------|-------|----------|--------------|---|--------|-----------|--------------------|------------------|------------------------|--------|-------|
| Black | Blue | Yellow | Red | Ivory | Green | | L" | x | W" | | | | | x | H" |
| CC975 | CB739 | CB741 | CB744 | CB745 | CC264 | QUS 205 | 4 1/2 | x | 4 1/8 | x | 3 | 24 | 8 | CB824 | - |
| CC976 | CB747 | CB750 | CB751 | CB753 | CC265 | QUS 210 | 5 3/8 | x | 4 1/8 | x | 3 | 24 | 10 | CB825 | - |
| CC977 | CB756 | CB757 | CB759 | CB762 | CC266 | QUS 220 | 7 1/2 | x | 4 1/8 | x | 3 | 24 | 10 | CB826 | - |
| CD276 | CD249 | CD262 | CD263 | CD264 | CD265 | QUS 224 | 10 7/8 | x | 4 1/8 | x | 4 | 12 | - | CD250 | CD266 |
| CC978 | CB763 | CB765 | CB766 | CB768 | CC267 | QUS 230 | 11 | x | 5 1/2 | x | 5 | 12 | 30 | CB829 | CB814 |
| CC979 | CB769 | CB771 | CB772 | CB774 | CC268 | QUS 233 | 13 1/2 | x | 5 1/2 | x | 5 | 12 | 30 | CB828 | CB812 |
| CC974 | CC971 | CC972 | CC973 | CC990 | CC970 | QUS 234 | 14 3/4 | x | 5 1/2 | x | 5 | 12 | - | CB836* | - |
| CC980 | CB775 | CB777 | CB778 | CB780 | CC269 | QUS 235 | 11 | x | 11 | x | 5 | 6 | 50 | CC569 | CB812 |
| CC576 | CB781 | CB783 | CB784 | CB786 | CC270 | QUS 239 | 11 | x | 8 1/4 | x | 7 | 6 | 50 | CB829 | CB815 |
| CC577 | CB787 | CB789 | CB790 | CB792 | CC271 | QUS 240 | 14 3/4 | x | 8 1/4 | x | 7 | 12 | 60 | CB830 | CB816 |
| CC983 | CC282 | CC283 | CC284 | CC285 | CC286 | QUS 245 | 11 | x | 16 1/2 | x | 5 | 6 | 60 | CB831 | CB818 |
| CC578 | CB794 | CB795 | CB796 | CB797 | CC272 | QUS 250 | 14 3/4 | x | 16 1/2 | x | 7 | 6 | 75 | CC297 | CC300 |
| CC579 | CB798 | CB800 | CB801 | CB802 | CC273 | QUS 255 | 16 | x | 11 | x | 8 | 4 | 75 | CB831 | CB819 |
| CC580 | CB803 | CB804 | CB806 | CB807 | CC274 | QUS 260 | 18 | x | 11 | x | 10 | 4 | 75 | CB833 | CB820 |
| CC581 | CC287 | CC288 | CC289 | CC290 | CC291 | QUS 265 | 18 | x | 8 1/4 | x | 9 | 6 | 60 | CB834 | CB821 |
| CC582 | CB808 | CB809 | CB810 | CB811 | CC275 | QUS 270 | 18 | x | 16 1/2 | x | 11 | 3 | - | CC298 | CC301 |
| | | | | | | | | | | | | | | CB835 | CB822 |

JUMBO 24" DEEP ULTRA BINS (DO NOT HANG ON LOUVERED PANELS OR RAIL SYSTEMS)

| | | | | | | | | | | | | | | | |
|---|-------|-------|-------|---|---|---------|--------|---|--------|---|----|---|---|--|--|
| - | CD545 | CD547 | CD546 | - | - | QUS 950 | 23 7/8 | x | 8 1/4 | x | 7 | 6 | - | | |
| - | CD548 | CD550 | CD549 | - | - | QUS 951 | 23 7/8 | x | 8 1/4 | x | 9 | 6 | - | | |
| - | CD551 | CD553 | CD552 | - | - | QUS 952 | 23 7/8 | x | 11 | x | 7 | 4 | - | | |
| - | CD554 | CD556 | CD555 | - | - | QUS 953 | 23 7/8 | x | 11 | x | 10 | 4 | - | | |
| - | CD557 | CD559 | CD558 | - | - | QUS 954 | 23 7/8 | x | 16 1/2 | x | 11 | 1 | - | | |
| - | CD560 | CD562 | CD561 | - | - | QUS 955 | 23 7/8 | x | 18 1/4 | x | 12 | 1 | - | | |

JUMBO DIVIDERS ONLY

| | |
|-------|-------|
| CD563 | CD569 |
| CD564 | CD570 |
| CD565 | CD571 |
| CD566 | CD572 |
| CD567 | CD573 |
| CD568 | CD574 |

*Indicates cross divider

OPEN HOPPER STORAGE SHELF UNITS

QUS 239 SERIES

- 28 QUS 239 Series bins
- 7 heavy-duty grey enamel shelves
- Dimensions: 36" W x 12" D x 76" H
- Capacity: 630 lbs. per shelf
- Shipped knocked down



CF118

QUS 240 SERIES

- 28 QUS 240 Series bins
- 7 heavy-duty grey enamel shelves
- Dimensions: 36" W x 12" D x 76" H
- Capacity: 630 lbs. per shelf
- Shipped knocked down



CF126

QUS 250 SERIES

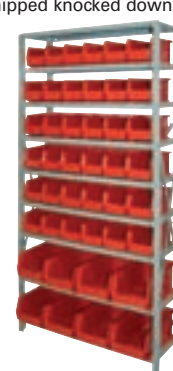
- 14 QUS 250 Series bins
- 7 heavy-duty grey enamel shelves
- Dimensions: 36" W x 12" D x 76" H
- Capacity: 630 lbs. per shelf
- Shipped knocked down



CF132

QUS 240 & 230 SERIES

- 8 QUS 240 Series bins
- 36 QUS 230 Series bins
- 9 heavy-duty grey enamel shelves
- Dimensions: 36" L x 12" D x 76" H
- Capacity: 630 lbs. per shelf
- Shipped knocked down



CF135

| Model No. | | | | | | Description | No. of Shelves |
|---------------------------------------|-------|--------|-------|-------|-------|-------------|----------------|
| Black | Blue | Yellow | Red | Ivory | Green | | |
| QUS 239 SERIES BINS SHELF UNIT | | | | | | | |
| CF176 | CF118 | CF119 | CF120 | CF121 | CF122 | Starter | 8 |
| CF180 | CF140 | CF141 | CF142 | CF143 | CF144 | Add-On | 8 |
| QUS 240 SERIES BINS SHELF UNIT | | | | | | | |
| CF178 | CF123 | CF124 | CF125 | CF126 | CF127 | Starter | 8 |
| CF182 | CF150 | CF151 | CF152 | CF153 | CF154 | Add-On | 8 |

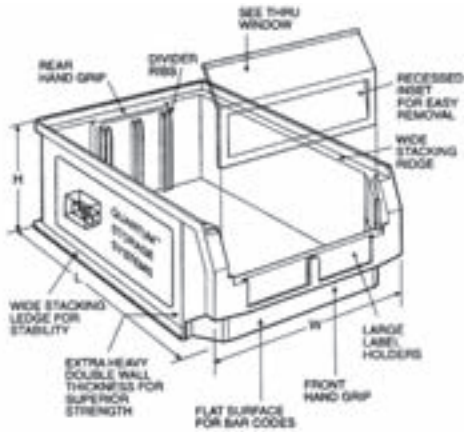
| Model No. | | | | | | Description | No. of Shelves |
|---|-------|--------|-------|-------|-------|-------------|----------------|
| Black | Blue | Yellow | Red | Ivory | Green | | |
| QUS 250 SERIES BINS SHELF UNIT | | | | | | | |
| CF177 | CF128 | CF129 | CF130 | CF131 | CF132 | Starter | 8 |
| CF181 | CF145 | CF146 | CF147 | CF148 | CF149 | Add-On | 8 |
| QUS 240 & 230 SERIES BINS SHELF UNIT | | | | | | | |
| CF179 | CF133 | CF134 | CF135 | CF136 | CF137 | Starter | 9 |
| CF183 | CF175 | CF155 | CF156 | CF157 | CF158 | Add-On | 9 |

GIANT STACKING CONTAINERS

GIANT STACKING CONTAINERS

- Injection moulded from high density polyethylene
- Extra heavy, double wall thickness with interlock preformed lip allows containers to stack securely
- Moulded carrying handle on backside
- Moulded-in divider and label slots
- Optional windows available
- Can withstand temperatures ranging from -40° to 250°F
- Waterproof, will not rust or corrode
- Unaffected by chemicals and solvents
- Mobile bin comes with 2 swivel, 2 rigid 3" casters
- 300-lb mobile capacity
- 200-lb stack capacity

MAGNUM



CC371

CC365

CC364



QUANTUM™
STORAGE
SYSTEMS



CC447

| Model No. (BINS) | | | | Mfg. No. | Outside Dimensions | | | Qty /Case | DIVIDER | | WINDOW | |
|------------------|--------|--------|--------|-----------|--------------------|---|--------|-----------|---------|-------|-----------|-----------|
| Blue | Green | Red | Yellow | | L" | x | W" | | x | H" | Model No. | Model No. |
| CC361 | CC362 | CC363 | CC364 | QMS531 | 19 3/4 | x | 12 3/8 | x | 5 7/8 | CC381 | CC385 | |
| CC365 | CC366 | CC367 | CC368 | QMS532 | 19 3/4 | x | 12 3/8 | x | 7 7/8 | CC382 | CC386 | |
| CC369 | CC370 | CC371 | CC372 | QMS533 | 19 3/4 | x | 12 3/8 | x | 11 7/8 | CC383 | CC387 | |
| CC373 | CC374 | CC375 | CC376 | QMS543 | 19 3/4 | x | 18 3/8 | x | 11 7/8 | CC384 | CC388 | |
| CC377* | CC378* | CC379* | CC380* | QMS743 | 29 | x | 18 3/8 | x | 11 7/8 | - | - | |
| CC447* | CC449* | CC448* | CC450* | QMS843MOB | 29 | x | 18 3/8 | x | 11 7/8 | - | - | |

* Includes heavy-duty spread bar for extra strength and support

MAGNUM GIANT OPEN HOPPER BIN SHELVING UNITS

- Dimensions: 18" D x 42" W x 76" H
- Capacity: 500 lbs. per shelf
- Shipped knocked down

| Model No. | | | | Description |
|----------------------|-------|--------|-------|-------------|
| Red | Blue | Yellow | Green | |
| SERIES QMS532 | | | | |
| CF072 | CF073 | CF074 | CF075 | Starter |
| CF089 | CF090 | CF091 | CF092 | Add-on |
| SERIES QMS533 | | | | |
| CF080 | CF081 | CF082 | CF083 | Starter |
| CF097 | CF098 | CF099 | CF100 | Add-on |
| SERIES QMS531 | | | | |
| CF188 | CF185 | CF186 | CF187 | Starter |
| SERIES QMS516 | | | | |
| *CF189 | | | | Starter |
| SERIES QMS543 | | | | |
| CF193 | CF190 | CF191 | CF192 | Starter |

* Mixed colors

SERIES QMS531

- 27-QMS531 open hopper bins
- 10 heavy-duty grey enamel shelves

CF187



SERIES QMS532

- 21 QMS532 open hopper bins
- 8 heavy-duty grey enamel shelves

CF074



SERIES QMS533

- 15 QMS533 open hopper bins
- 6 heavy-duty grey enamel shelves

CF081



SERIES QMS516

- 4-QMS543-red, 3-QMS533-blue, 6-QMS532-yellow and 3-QMS531-blue open hopper bins
- 7 heavy-duty grey enamel shelves

CF189



SERIES QMS543

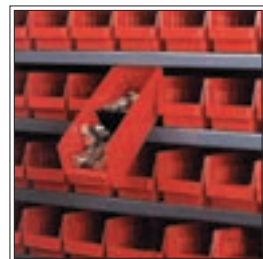
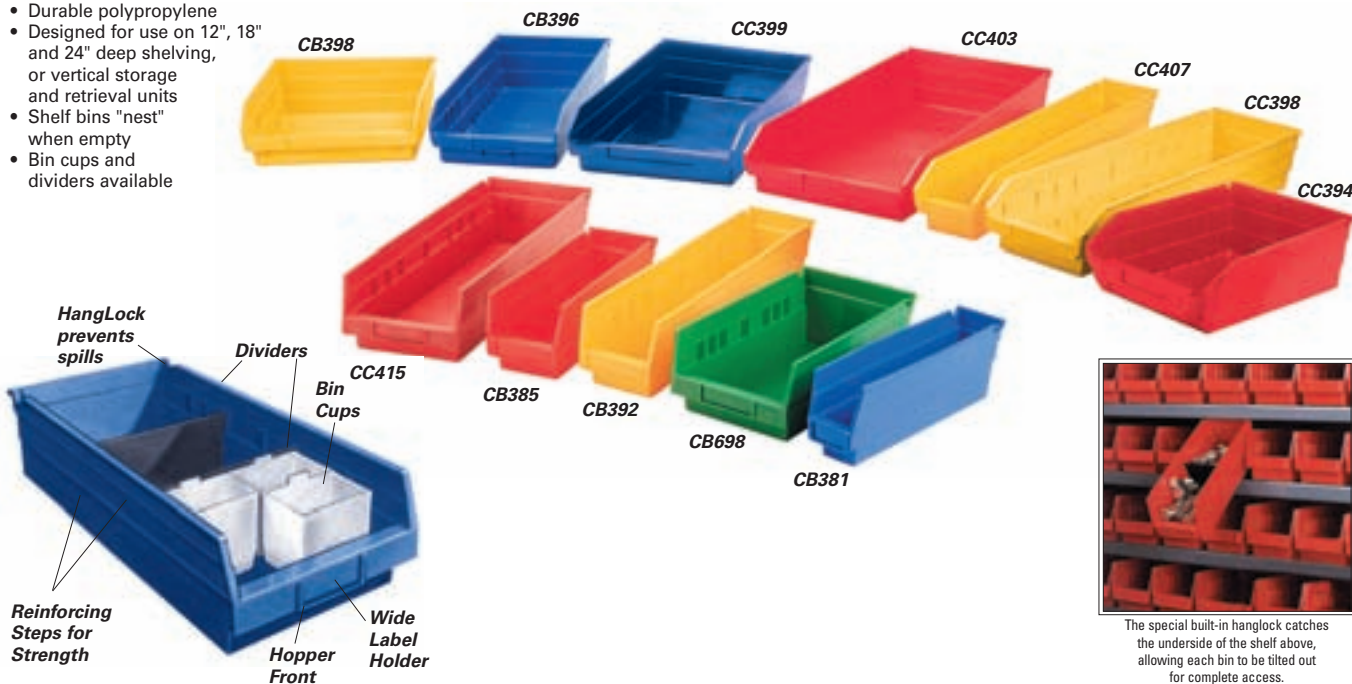
- 10-QMS543 open hopper bins
- 6 heavy-duty grey enamel shelves

CF193



PLASTIC SHELF BINS

- Economical way to store and display parts and components
- Durable polypropylene
- Designed for use on 12", 18" and 24" deep shelving, or vertical storage and retrieval units
- Shelf bins "nest" when empty
- Bin cups and dividers available



The special built-in hanglock catches the underside of the shelf above, allowing each bin to be tilted out for complete access.

| Blue | Bin Model No. | Yellow | Green | Mfg. No. | Outside Dimensions L" x W" x H" | Inside Dimensions L" x W" x H" | Qty /Case | Dividers, up to 7 per bin | Bin Cups Per Bin | CD041 |
|--------|---------------|--------|--------|----------|------------------------------------|-----------------------------------|-----------|------------------------------|------------------|-------|
| Red | Yellow | Green | | | | | | CB379 | CB380 | CD036 |
| CB381 | CB382 | CB383 | CB696 | 30-110 | 11 5/8 x 2 3/4 x 4 | 10 1/4 x 1 5/8 x 4 | 24 | N/A | N/A | N/A |
| CB384* | CB385* | CB386* | CB697* | 30-120 | 11 5/8 x 4 1/8 x 4 | 10 1/4 x 3 x 4 | 24 | CB420 | 5 | 2 |
| CB393* | CB394* | CB395* | CB698* | 30-130 | 11 5/8 x 6 5/8 x 4 | 10 1/4 x 5 1/2 x 4 | 12 | CB421 | 9 | 4 |
| CC393 | CC394 | CC395 | N/A | QSB107 | 11 7/8 x 8 1/8 x 4 | 10 3/4 x 7 1/2 x 3 7/8 | 20 | CB867 | N/A | N/A |
| CC396 | CC397 | CC398 | N/A | QSB109 | 11 7/8 x 11 1/8 x 4 | 10 3/4 x 10 3/8 x 3 7/8 | 8 | CB869 | N/A | N/A |
| CB390* | CB391* | CB392* | CB699* | 30-128 | 17 7/8 x 4 1/8 x 4 | 16 1/2 x 3 x 4 | 12 | CF021 | 8 | 3 |
| CB396* | CB397* | CB398* | CB700* | 30-138 | 17 7/8 x 6 5/8 x 4 | 16 1/2 x 5 1/2 x 4 | 12 | CF022 | 15 | 6 |
| CC399 | CC400 | CC401 | N/A | QSB108 | 17 7/8 x 8 1/8 x 4 | 16 1/2 x 7 1/2 x 3 7/8 | 10 | CB867 | N/A | N/A |
| CC402 | CC403 | CC404 | N/A | QSB110 | 17 7/8 x 11 1/8 x 4 | 16 3/8 x 10 3/8 x 3 7/8 | 8 | CB869 | N/A | N/A |
| CC405 | CC406 | CC407 | N/A | QSB105 | 23 7/8 x 4 1/8 x 4 | 22 1/4 x 3 1/4 x 3 7/8 | 8 | CB861 | N/A | N/A |
| CC408 | CC409 | CC423 | N/A | QSB106 | 23 7/8 x 6 5/8 x 4 | 22 1/4 x 5 1/2 x 3 7/8 | 8 | CB862 | N/A | N/A |
| CC411 | CC412 | CC413 | N/A | QSB114 | 23 7/8 x 8 1/8 x 4 | 22 1/4 x 7 1/2 x 3 7/8 | 6 | CB867 | N/A | N/A |
| CC414 | CC415 | CC416 | N/A | QSB116 | 23 7/8 x 11 1/8 x 4 | 22 1/4 x 10 3/8 x 3 7/8 | 6 | CB869 | N/A | N/A |

* 2 full width adjustable/removable dividers included

BIN DIVIDERS

| Model No. | Mfg. No. | Description | Qty/case |
|-----------|----------|-----------------------|----------|
| CF021 | 40-128 | Divider, 3" wide | 24 |
| CF022 | 40-138 | Divider, 5 1/2" wide | 24 |
| CB867 | DSB107 | Divider, 8 1/8" wide | 50 |
| CB869 | DSB109 | Divider, 11 1/8" wide | 50 |
| CB861 | DSB101 | Divider, 4 1/8" wide | 50 |
| CB862 | DSB102 | Divider, 6 5/8" wide | 50 |
| CB420 | 40-120 | Divider, 3" wide | 24 |
| CB421 | 40-130 | Divider, 5 1/2" wide | 24 |

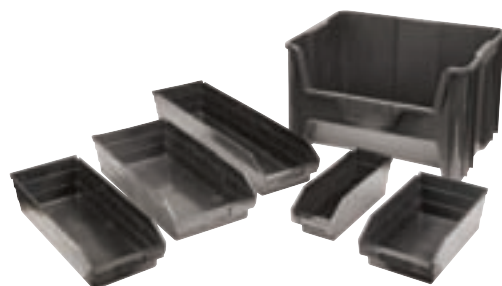
BIN CUPS

| Model No. | Mfg. No. | Colour | Description |
|-----------|----------|--------|--------------------------|
| CB379 | 30-101 | White | Bin cup, 3 1/4" x 2" |
| CB380 | 30-102 | White | Bin cup, 5" x 2 3/4" |
| CD036 | QBC111 | Yellow | Bin cup, 3 1/4" x 1 3/4" |
| CD041 | QBC112 | Yellow | Bin cup, 5 1/8" x 2 3/4" |

RECYCLED SHELF BINS

- Manufactured from recycled 100% post consumer, high density polyethylene
- Available in black only

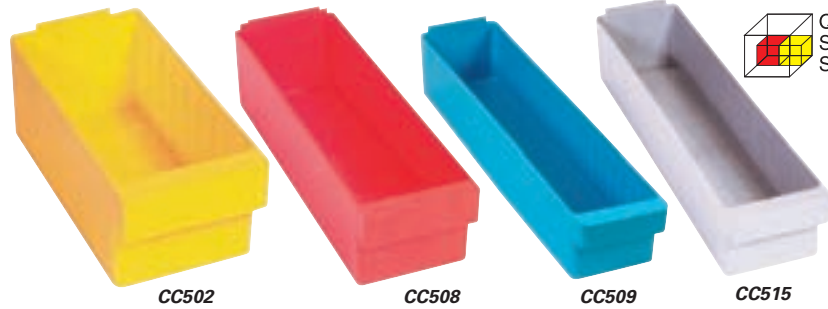
| Model No. | Mfg. No. | Outside Dimensions L" x W" x H" | Inside Dimensions L" x W" x H" | Qty /Case | Wt. lbs. | Dividers Model No. |
|-----------|------------|------------------------------------|-----------------------------------|-----------|----------|--------------------|
| CB850 | QSB 101 BR | 11 7/8 x 4 1/8 x 4 | 10 3/4 x 3 1/4 x 3 7/8 | 36 | 0.41 | CB861 |
| CB851 | QSB 102 BR | 11 7/8 x 6 5/8 x 4 | 10 3/4 x 5 1/2 x 3 7/8 | 30 | 0.53 | CB862 |
| CB954 | QSB 104 BR | 17 7/8 x 6 5/8 x 4 | 16 1/2 x 5 1/2 x 3 7/8 | 20 | 0.9 | CB862 |
| CB854 | QSB 105 BR | 23 7/8 x 4 1/8 x 4 | 22 1/4 x 3 1/4 x 3 7/8 | 16 | 0.94 | CB861 |
| CB855 | QSB 106 BR | 23 7/8 x 6 5/8 x 4 | 22 1/4 x 5 1/2 x 3 7/8 | 8 | 1.5 | CB862 |
| CB857 | QSB 108 BR | 17 7/8 x 8 1/8 x 4 | 16 1/2 x 7 1/2 x 3 7/8 | 10 | 1.2 | CB867 |
| CB860 | QSB 114 BR | 23 7/8 x 8 1/8 x 4 | 22 1/4 x 7 1/2 x 3 7/8 | 6 | 1.5 | CB867 |
| CC304 | QSB 116B | 23 7/8 x 11 1/8 x 4 | 22 1/4 x 10 3/8 x 3 7/8 | 6 | 2.0 | CB869 |
| CC241 | QGH 700 BR | 15 1/4 x 19 7/8 x 12 7/16 | - | 3 | 13 | N/A |



STORAGE BINS

EURO DRAWERS

- Heavy-duty design for efficient organization of heavy parts, supplies, tools or equipment
- Injection moulded from virgin grade high-impact polystyrene
- 12-gauge thick wall
- Completely waterproof
- Oil and chemical-resistant
- Smooth front curved pull handle has ample room for pressure sensitive identification labels or bar codes
- Front handle has 3/4" opening
- Full width back ledge ensures spill free use



| Model No. | Series | Colour | Outside Dimensions | | | Inside Dimensions | | | Qty /Case | Divider Model No. |
|-----------|--------|--------|--------------------|----------|---------|-------------------|----------|---------|-----------|-------------------|
| | | | L" | x W" | x H" | L" | x W" | x H" | | |
| CC501 | QED601 | Blue | 11 5/8 | x 5 9/16 | x 4 5/8 | 10 9/16 | x 5 3/16 | x 4 3/8 | 24 | CC517 |
| CC502 | QED601 | Yellow | 11 5/8 | x 5 9/16 | x 4 5/8 | 10 9/16 | x 5 3/16 | x 4 3/8 | 24 | CC517 |
| CC503 | QED601 | Grey | 11 5/8 | x 5 9/16 | x 4 5/8 | 10 9/16 | x 5 3/16 | x 4 3/8 | 24 | CC517 |
| CC504 | QED601 | Red | 11 5/8 | x 5 9/16 | x 4 5/8 | 10 9/16 | x 5 3/16 | x 4 3/8 | 24 | CC517 |
| CC505 | QED602 | Blue | 17 5/8 | x 5 9/16 | x 4 5/8 | 16 9/16 | x 5 3/16 | x 4 3/8 | 24 | CC517 |
| CC506 | QED602 | Yellow | 17 5/8 | x 5 9/16 | x 4 5/8 | 16 9/16 | x 5 3/16 | x 4 3/8 | 24 | CC517 |
| CC507 | QED602 | Grey | 17 5/8 | x 5 9/16 | x 4 5/8 | 16 9/16 | x 5 3/16 | x 4 3/8 | 24 | CC517 |
| CC508 | QED602 | Red | 17 5/8 | x 5 9/16 | x 4 5/8 | 16 9/16 | x 5 3/16 | x 4 3/8 | 24 | CC517 |
| CC509 | QED603 | Blue | 23 7/8 | x 5 9/16 | x 4 5/8 | 22 3/4 | x 5 3/16 | x 4 3/8 | 12 | CC517 |
| CC510 | QED603 | Yellow | 23 7/8 | x 5 9/16 | x 4 5/8 | 22 3/4 | x 5 3/16 | x 4 3/8 | 12 | CC517 |
| CC511 | QED603 | Grey | 23 7/8 | x 5 9/16 | x 4 5/8 | 22 3/4 | x 5 3/16 | x 4 3/8 | 12 | CC517 |
| CC512 | QED603 | Red | 23 7/8 | x 5 9/16 | x 4 5/8 | 22 3/4 | x 5 3/16 | x 4 3/8 | 12 | CC517 |
| CC513 | QED604 | Blue | 17 5/8 | x 3 3/4 | x 4 5/8 | 16 9/16 | x 3 1/2 | x 4 3/8 | 24 | CC518 |
| CC514 | QED604 | Yellow | 17 5/8 | x 3 3/4 | x 4 5/8 | 16 9/16 | x 3 1/2 | x 4 3/8 | 24 | CC518 |
| CC515 | QED604 | Grey | 17 5/8 | x 3 3/4 | x 4 5/8 | 16 9/16 | x 3 1/2 | x 4 3/8 | 24 | CC518 |
| CC516 | QED604 | Red | 17 5/8 | x 3 3/4 | x 4 5/8 | 16 9/16 | x 3 1/2 | x 4 3/8 | 24 | CC518 |

Add dividers to Euro Drawers for additional storage possibilities!



EURO DRAWER CLOSED SHELF UNITS

- 13 heavy-duty grey enamel shelves
- Capacity: 630 lbs. per shelf
- Shipped knocked down

INCLUDES:

- 72 QED601 Series Euro drawers
- Dimensions: 36" W x 12" D x 76" H

- 108 QED604 Series Euro drawers
- Dimensions: 36" W x 18" D x 76" H

| Model No. | | | | | No. of |
|-----------|--------|-------|-------|-------------|---------|
| Blue | Yellow | Grey | Red | Description | Shelves |
| CF102 | CF103 | CF104 | CF105 | Starter | 13 |
| CF159 | CF160 | CF161 | CF162 | Add-On | 13 |

| Model No. | | | | | No. of |
|-----------|--------|-------|-------|-------------|---------|
| Blue | Yellow | Grey | Red | Description | Shelves |
| CF110 | CF111 | CF112 | CF113 | Starter | 13 |
| CF167 | CF168 | CF169 | CF170 | Add-On | 13 |

- 72 QED602 Series Euro drawers
- Dimensions: 36" W x 18" D x 76" H

- 72 QED603 Series Euro drawers
- Dimensions: 36" W x 24" D x 76" H

| | | | | | |
|-------|-------|-------|-------|---------|----|
| CF106 | CF107 | CF108 | CF109 | Starter | 13 |
| CF163 | CF164 | CF165 | CF166 | Add-On | 13 |

| | | | | | |
|-------|-------|-------|-------|---------|----|
| CF114 | CF115 | CF116 | CF117 | Starter | 13 |
| CF171 | CF172 | CF173 | CF174 | Add-On | 13 |



STACK-N-NEST® STORAGE BINS

- Great for storing, assembling and transporting small parts, components and finished goods
- Designed for maximum efficiency and utility
- Set together one way they stack and the other way they nest
- May be used on shelving or stacked up
- Heavy-duty design allows higher stacking
- In the plant, use the same bin for storage, handling, and assembly, no need to transfer contents



| Model No. | Colour | Outside Dimensions | | | Wt. lbs. |
|-----------|--------|--------------------|----------|------|----------|
| | | L" | x W" | x D" | |
| CC890 | Blue | 15 1/4 | x 12 1/4 | x 6 | 2 |
| CC891 | Red | 15 1/4 | x 12 1/4 | x 6 | 2 |
| CC892 | Yellow | 15 1/4 | x 12 1/4 | x 6 | 2 |