

PALLET HANDLING EQUIPMENT

SKID LIFTS

- Allows entry into different skids and baskets
- Lightweight design is easy to manoeuvre with pallet truck style steering configuration
- Strong and reliable cylinder
- Quick-lift mechanism on manual lifts allows loads under 400 lbs. to be raised with 24 strokes, heavier loads require 72 strokes
- Self-contained battery powered power pack (electric models) eliminates power source or power cord problems
- Built-in automatic battery charger and charge indicator (electric models)
- Raised bulkhead design provides greater backrest surface, ergonomic location for automatic battery charger and clear view of load
- 24" load center
- Lowered height: 3 1/4", raised height: 31 1/2"
- 8" polyurethane load wheels and 3" polyurethane load roller
- Capacity: 3000 lbs.



LIFFRITE

Model No.	Dim. of forks"	Wt. lbs.
MANUAL LIFTS		
MH748	20.5 x 48	330
MH749	27 x 48	340

Model No.	Dim. of forks"	Wt. lbs.
ELECTRIC LIFTS		
MH796	20.5 x 48	430
MH797	27 x 48	440

GALVANIZED PLATED PALLET TRUCK

- Designed to withstand corrosive and wet environments
- Ideal for use in chemical, pharmaceutical and wash-down applications
- Steering and load wheels are made of nylon to provide durability in cold environments
- Fork length: 48"
- Overall fork width: 27"
- Load capacity: 5,500 lbs.
- Lowered fork height: 2 7/8"
- Raised fork height: 7 3/4"
- Weight: 327 lbs.
- **Not approved for clean rooms**

Model No. MK830



STAINLESS STEEL PALLET TRUCKS



- Ideal for sanitary, pharmaceutical, medical, food and wet applications
- Available with type 304 stainless steel frames and forks or complete stainless steel construction
- Complete stainless steel units are ideal for food service when combined with food-approved hydraulic oil
- All models feature nylon steering and load wheels
- Fork height: 2 7/8" minimum, 7 3/4" maximum
- Capacity: 5,500 lbs.
- **Not approved for clean rooms**



Model No.	Description	Overall Fork Width"	Overall Fork Length"	Wt. lbs.
MK827	Stainless Steel Frame and Forks	27	48	285
MK828	Complete Stainless Steel	27	48	285
MK829	Complete Stainless Steel	20	48	300

FORK EXTENSIONS

- Handle large and odd shaped loads with increased stability and minimum damage
- Available in 4", 5" and 6" fork widths, lengths are from 54" to 96"
- Easy to use slide-on design
- Fork fits up to 2" thick
- Convenient on/off design
- Locking bar keeps extensions in place
- Fork extension not to exceed 50% more than existing fork



Model No.	Accommodates Fork Width"	Fork Extension Overall Width"	Length"	Max. Fork Thickness"	Wt. lbs.
MF775	4	5	54	2	109
MF776	4	5	63	2	125
MF777	4	5	72	2	135
MF778	4	5	84	2	157
MF779	4	5	96	2	173
MF781	5	6	54	2	126
MF782	5	6	63	2	151
MF783	5	6	72	2	155
MF784	5	6	84	2	189
MF785	5	6	96	2	201
MF787	6	7	54	2 1/2	146
MF788	6	7	63	2 1/2	165
MF789	6	7	72	2 1/2	166
MF790	6	7	84	2 1/2	199
MF791	6	7	96	2 1/2	210

Also available: Add-on for optional pins style fork extension and other lengths.

CAROUSEL PALLET TURNTABLES

Loading and unloading operations that originally required a large amount of time can be done more efficiently with less fatigue and risk of back injury. The carousel may be added to an existing workbench, scissors table or simply placed on the floor. This *Lazy Susan* concept is constructed from two pieces of rolled structural angle. A series of roller bearings transfer the load smoothly and evenly to the supporting surface. Overall height is 2 1/4".



Model No.	Outside Diameter"	Capacity lbs.	Wt. lbs.
MH204	40	2000	40
MH205	40	4000	44
MH206	40	6000	48
MH207	48	2000	48
MH208	48	4000	51
MH209	48	6000	55

LIFT TABLES & SKID LIFTS

HYDRAULIC LIFT TABLES

- Foot operated lifts are ideal for wide variety of shop functions (lifting dies, transporting heavy parts and positioning materials)
- Hand operated lever lowers the table level and controls the rate of descent
- All welded units
- Telescoping posts for stability and support
- Tops are 3/16" thick steel
- 4" x 2" roller bearing phenolic casters
- Capacity: 2500 lbs.



Model No.	Table Height		Table Size		Wt. lbs.
	Lowered"	Raised"	Width" x Depth"		
MG782	31	50	18 x 18		170
MG783	31	50	18 x 36		225
MG784	31	50	24 x 36		255
MG785	31	50	30 x 42		325



MG782



MG784

STAINLESS STEEL HYDRAULIC SCISSOR LIFT TABLES

- Ideal for use in corrosive and wet environments
- Portable ergonomic stainless steel carts eliminate worker bending and lifting while providing maximum protection from corrosion
- Can also be used in conjunction with food grade hydraulic oil for food service applications
- All components assembled from high quality stainless steel except hydraulic cylinder and casters
- Foot pump includes a soft-lowering down valve
- Includes: Four polyurethane casters, two swivel with brakes, and two rigid for mobility



MK812

MK813



Model No.	Platform Width"	Size Length"	Capacity lbs.	Table Lowered"	Height" Raised"	Wt. lbs.
MK812	19.5	31.5	550	9.75	33.5	160
MK813	23.5	35.5	1100	13	38.5	240

HYDRAULIC SKID LIFTS/TABLES

- Transport and position skids, wire baskets and containers to comfortable working heights
- Add optional slip-on table top create a mobile, variable height work table
- Lifting range is from 3 1/4" to 32 3/4"
- Heavy gauge steel construction
- 6" polyurethane swivel casters in the rear, 3" x 4" load wheels on legs
- Locking foot break
- Double roller chain lifts forks evenly and smoothly
- Lifting for 1000-lbs. capacity is accomplished with a hydraulic foot pedal
- 2200-lbs. capacity comes with an off-set steering wheel and control (pump) handle that elevates forks
- Approx 50 strokes to reach maximum height
- Release knob on handle lowers forks
- 62" truck length
- Not designed for lifting double-sided pallets



Model No.	Fork Width"	Fork Length"	Capacity lbs.	Wt. lbs.
MK792	20 1/2	42 1/2	1000	226
MA445	20 1/2	42 1/2	2000	323
MK793	27	42 1/2	1000	238
MA447	27	42 1/2	2000	334

SCISSOR LIFT TABLE

This lift table is built of rugged construction, with heavy gauge steel and sturdy continuous welds throughout. Equipped with a steel work platform and high quality casters with bearings for greater maneuverability. Superior hydraulic system includes a chromed long-life cylinder. The surfaces are degreased and a quality baked enamel finish is applied. Table is able to lift a capacity of 660 lbs.

Table size: 20 1/2" x 39 3/4".
Overall dimensions:
48 1/2" x 20 1/2" x 37 3/4".
Minimum lifting height: 17"
Maximum lifting height: 62 1/8"
Model No. MH210



OPTIONAL TABLES

Model No.	Description	Wt. lbs.
MK794	Optional Slip-On Table for MK792	35
MK796	Optional Slip-On Table for MA445	35
MK795	Optional Slip-On Table for MA793	44
MK797	Optional Slip-On Table for MA447	44

EZ LOADER PALLET LIFTERS

Automatically positions the pallet to the proper height for on or off-loading. Minimizes bending and lifting, reduces extra movement around the pallet. The EZ Loader is weight sensitive: it raises and lowers the pallet as the load weight changes, keeping the top of the load at a convenient working height. Rotating top minimizes walking or reaching during the loading process. Allows on or off loading to be done from the near side and at a convenient height. Use 75 PSI pressurized air to initially pressurize the Firestone Airstroke Actuator™; a bleed valve allows adjusting of height to exact requirements. Adjustable to handle loads from 850 to 4500 lbs. or 450 to 3000 lbs., depending on model. Heavy-duty, structural steel frame is 30" x 50 1/2" at base; turntable is 43" in diameter.

* Inquire about stainless steel EZ Loader pallet lifters

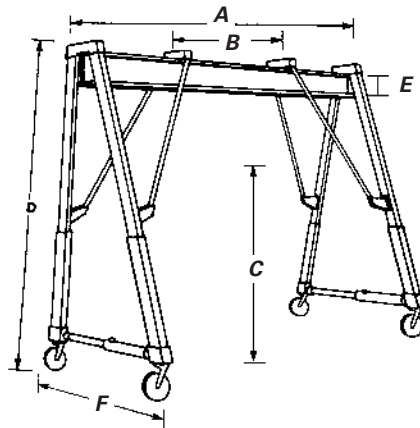
Model No.	Capacity Range	PSI	Height Range"	Wt. lbs.
MA500	450 to 3000 lbs.	75	8 3/4 - 30	500
MA501	850 to 4500 lbs.	65	8 3/4 - 30	525



CRANES & PALLETS LIFTERS

ADJUSTABLE GANTRY CRANES

- Adjustable height
- 4 heavy-duty swivel casters with wheel brakes
- Beam type is I and taper-wheel trolleys are required
- Shipped knocked down



Model No.	Lifting Cap. lbs.	Overall Span A'	Clear Span B	Hook Lift Min/Max C	Overall Height Min/Max D	Beam Height E"	Wheel Spread Min/Max F	Beam Width"	Wt. lbs.
LA189	2000	10	4'7"	6'6 1/2"/12' 4 1/2"	8'9"/14'7"	6	4'7"/7'	3 3/8	885
LA190	2000	15	9'7"	6'4 1/2"/12'2 1/2"	8'9"/14'7"	8	4'7"/7'	4	1050
LA191	4000	10	4'7"	6'4 1/2"/12'2 1/2"	8'9"/14'7"	8	4'7"/7'	4	1165
LA192	4000	15	9'7"	5'10 1/2"/11'8 1/2"	8'9"/14'7"	10	4'7"/7'	4 5/8	1370
LA193	6000	10	4'7"	5'9"/11'7"	8'9"/14'9"	10	4'10"/7'3"	4 5/8	1430
LA194	6000	15	9'7"	5'9"/11'7"	8'9"/14'9"	10	4'10"/7'3"	4 5/8	1615

F.O.B. Vaudreuil, Quebec.

Items are made to order and are non-returnable

TRUCK MOUNT CRANES

- Portable lifting power
- Mounted on truck frame, cranes provide fast loading and unloading with minimal effort
- Useful in other areas such as work station loading docks or beside machinery
- Telescoping extension boom swings 360° when mounted on truck frame
- Equipped w/ base, manual pump, adjustable chain and hook, safety pins, handle and mounting hardware
- Extra pedestals available
- Shipped knocked down

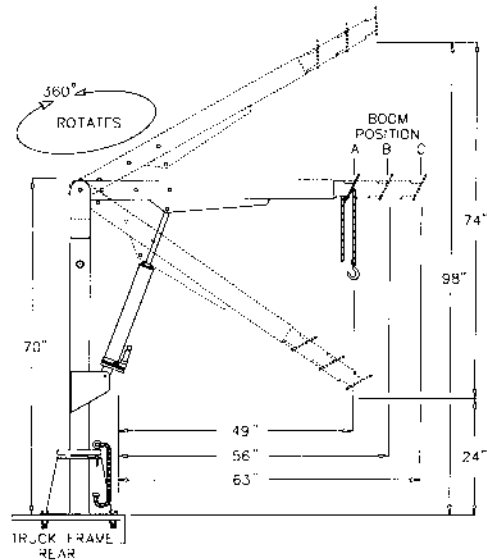
Model No.	Boom Reach"/ Capacity lbs.			Lift Clearance"		Wt. lbs.
	A	B	C	Min	Max	
LA568	30/500	43/320	-	30	90	220
LA792	36/1500	43/1000	63/800	24	98	240

REPLACEMENT PUMP & REPAIR KIT

LA838	Replacement hydraulic pump
LA839	Pump (seals) repair kit

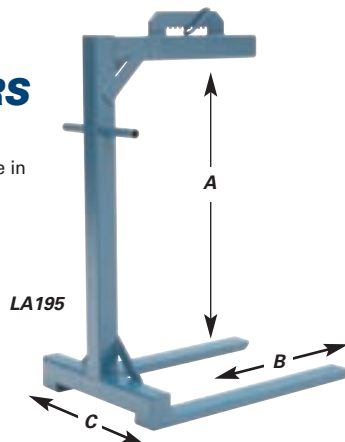
F.O.B. Vaudreuil, Quebec.

Items are made to order and are non-returnable



PALLET LIFTERS

- Ideal for use with a crane system or truck cranes
- Economical pallet lifters available in 4 capacities with 3 adjustable or non-adjustable fork lengths to choose from
- A - Throat height (clear) 48"
- B - Fork length 36", 42" or 48"
- C - Width (O.D.) 27"



Cap lbs.	Fork Length"	Standard Model No.	Wt. lbs.	Adj. Model No.	Wt. lbs.
1000	36	LA195	190	LA207	270
	42	LA196	230	LA208	295
	48	LA197	255	LA209	325
2000	36	LA198	195	LA210	280
	42	LA199	233	LA211	305
	48	LA200	260	LA212	335
4000	36	LA201	310	LA213	380
	42	LA202	337	LA214	430
	48	LA203	370	LA215	475
6000	36	LA204	522	LA216	575
	42	LA205	662	LA217	560
	48	LA206	602	LA218	612

F.O.B. Vaudreuil, Quebec.

Items are made to order and are non-returnable