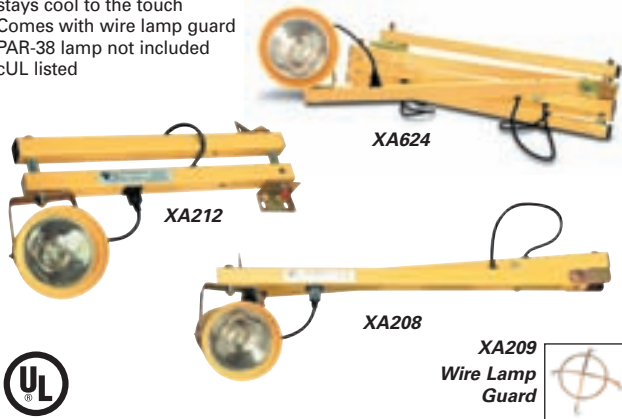


DOCK EQUIPMENT & ACCESSORIES

DOCK LIGHTS

- The adjustable models allows flexible horizontal and vertical positioning
- 1 1/2", 14-gauge square steel tubing
- Two-piece wall bracket assures secure mounting
- Available with either metal head or polycarbonate head which will not dent, bend or break, and stays cool to the touch
- Comes with wire lamp guard
- PAR-38 lamp not included
- cUL listed



Model No.	Arm Length"	Head Type	Wt. lbs.
-----------	-------------	-----------	----------

ADJUSTABLE SINGLE STRUT

XA213	40	Metal	16
XA208	60	Metal	21

DOUBLE STRUT - HORIZONTAL POSITIONING ONLY

XA212	24	Metal	16
XA211	40	Metal	18
XA214	60	Metal	23
XA349	90	Metal	35
XA350	114	Metal	43

ADJUSTABLE DOUBLE STRUT

XA619	40	Metal	18
XA620	60	Metal	21
XA621	90	Metal	31
XA622	114	Metal	35
XA623	40	Polycarbonate	17
XA624	60	Polycarbonate	20
XA625	90	Polycarbonate	30
XA626	114	Polycarbonate	34

ACCESSORIES

Model No.	Description
XA209	Replacement Wire Guard
XB235	Replacement PAR-38 lamp
XC224	Replacement metal head

HALOGEN DOCKLIGHT

- 40' full extension
- Tempered glass lens with protective wire guard
- Light fixture can pivot up & down
- Includes two 500W quartz halogen bulbs
- Arm has spare bulb holder built in
- Suitable for wet areas
- On/Off toggle switch
- 6' cord with ground
- cUL listed



LIND EQUIPMENT LTD.

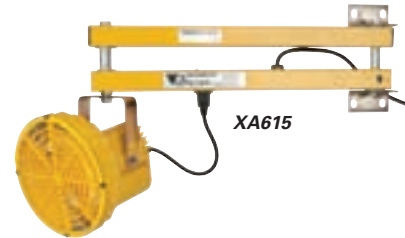
Model No.	Arm Length"	Wt. lbs.
XA673	40	15
XB149	Replacement bulb	-

B100

POLYCARBONATE HIGH PRESSURE SODIUM LAMP HEADS

ENERGY SAVER!

- Double strut construction for horizontal positioning
- 1 1/2", 14 gauge square steel tubing
- 50 W high pressure sodium lamp & lamp guard included
- Offers a 63% energy savings over 150 W incandescent PAR floodlights



Model No.	Description	Wt. lbs.	Model No.	Description	Wt. lbs.
XA615	Extends 24"	14	XA617	Extends 60"	21
XA616	Extends 40"	17	XA618	Extends 90"	29

ACCESSORIES

XB205	50 Watt High Pressure Sodium Bulb	1
-------	-----------------------------------	---

WARNING LIGHTS

- Solid state flashing warning light suited for any industrial use, such as lift trucks, vans and shop cars
- 75-90 flashes per minute
- No motor to replace



Amber	Blue	Red	Volts
XA321	XA324	XA325	12
XA193	XA334	XA332	24
XA320	XA331	XA330	36
XA322	XA329	XA333	48

LED STOP & GO LIGHT

Loading Dock Stop & Go Light is a safety signaling device that alerts truck drivers and loading dock personnel to the safety status of docked or docking trucks.



- Simple, reliable and cost-effective warning system that reduces the risk of accidents
- Establishes a clear line of communication between drivers and dock personnel
- Safety yellow polypropylene housing will not rust, pit, dent or corrode
- Shallow depth of unit (less than most dock bumpers) prevents damage to the Stop & Go Light
- Integral eyebrow-type sun visors create extended visibility
- Mounting holes conform to standard building specifications
- Units can be used indoors or outdoors
- Dimensions:
6 3/8" W x 3 3/4" D x 11 3/8" H. Lens diameter: 4 1/4"
- cUL approved
- Weight: 2 lbs.



12 VDC	Model No.	24 VDC	115 VAC	Description
XC100	XC101	XC102		Stop & Go - Drone Unit
XC103	XC104	XC105		Stop & Go - With Toggle Switch
XC106	XC107	XC108		Stop & Go - Set, including one of each of the above

CORD REELS & WORK LIGHTS



WORKLIGHTS

- Weatherproof
- Tempered glass lens
- Chrome-plated, solid steel guard
- Shock-resistant double insulated wiring
- 500 watt colour-corrected quartz halogen bulb included
- 16-gauge heavy-duty chemical and abrasion resistant cord
- Powder-coated steel construction
- Rubber leg tips protect floors and surfaces
- 1 year limited warranty



1' TO 3' TELESCOPIC

- 8' cord
- Collapsible steel base
- Lights up to 6,000 sq. ft.

Model No. XA150

4' TO 8' TELESCOPIC

- Double-reinforced sandbaggage steel base expands to 48"
- 15' cord
- Lights up to 7,000 sq. ft.

Model No. XA140

4' TO 8' TELESCOPIC TWIN

- Twin head independently adjustable 360°
- Two 10-A switches
- Double-reinforced sandbaggage steel base expands to 48"
- 15' cord
- Lights up to 14,000 sq. ft.

Model No. XA141

REPLACEMENT BULB ON ALL 3 STYLES

Model No. XB149



PORTABLE HALOGEN WORK LIGHT

- Quartz halogen fixture
- 500 watt bulb included
- Colour: Black and yellow
- CSA approved

Model No. XA992

REPLACEMENT BULB

Model No. XB149



WEATHERPROOF QUARTZ HALOGEN FIXTURES

- Double fixture with adjustable tripod
- 500 W bulbs included
- Extended height: 7'
- CSA approved
- Colour: Yellow

Model No. XA007

REPLACEMENT BULB

Model No. XB149



WORK REELS

INCANDESCENT WORK LIGHT REEL

Incandescent work light is rated for a 75 W bulb. Includes switch and circuit breaker protected convenience outlet. Grounded metal guard with reflector protects the bulb.

EXTENSION REEL

Triple outlet extension reel with reel circuit breaker.

13 W FLUORESCENT WORK LIGHT REEL

Includes switch, hanging hook, and full-length reflector. Rugged polycarbonate shield is easily removed for tool-free lamp replacement. Light output is 900 lumens.



Model No. Description

INCANDESCENT WORK LIGHT REELS

XA640	20' 18/3 SVT cord, 7 A rating
XA155	30' 16/3 SJT cord, 10 A rating
XA921	50' 18/3 SVT cord, 7 A rating

EXTENSION REELS

XA154	30' 16/3 SJT cord, 10 A rating
XB281	30' 14/3 SJT cord, 13 A rating

FLUORESCENT WORK LIGHT REEL

XA289	40' 18/2 SJT cord
XA412	30' 16/3 SJT cord, 10 A outlet in light



FLUORESCENT WORK LIGHTS

- Cool running
- Shatter resistant polycarbonate tube
- Includes enclosed starter switch, rubber end caps, a full-length reflector, and hanging hook
- Moisture and dust resistant
- Light output is 900 lumens
- Colour: Yellow
- 25'. 18/2 SJTOW cord

Model No. XA146

13 W, 10" length

Model No. XA149,

15 W, 22" length



INCANDESCENT HAND LAMPS

- 100-W explosion proof light provides 1600 lumens of light output
- CSA and UL approved for Class Division I Group C and D hazardous locations
- 16/3 SOOW cord with a non-explosion proof plug (explosion proof plug is also available)

Model No. XA269 25' cord

Model No. XA103 50' cord

REPLACEMENT BULB

Model No. XB123



INCANDESCENT WORK LIGHTS

- Rated for a 100 W bulb
- Protected by heavy-gauge metal guard and reflector
- Includes circuit breaker protected convenience outlet, rated for a full 15 A capacity
- Colour: Yellow
- 14/3 SJTOW cord

Model No. XA175, 25'

Model No. XA918, 50'



B184

RECHARGEABLE AC/DC WORK LIGHT

- 60 LEDs up to 100,000-hour bulb life
- Durable ABS plastic
- Up to 8 hours on a full charge
- Impact, oil and water resistant
- Includes: Charger, car charger and powerful magnet

Model No. XC233



FLUORESCENT WORK LIGHTS

- Cool running fluorescent bulb
- Shatter resistant polycarbonate lamp shield
- Includes: full length reflector, switch and hook
- Models XB906, XB907 and XB967 also have a magnet mount and outlet



Model No. Description Length"

COMPACT TWIN-TUBE

XB906	13 W, 25' Cord, 16/3 SJT	13
XB907	13 W, 50' Cord, 16/3 SJT	13
XB967	26 W, 25' Cord, 16/3 SJT, Dual Twin-Tube	15

XA251 Replacement Bulb

LINEAR FLUORESCENT

XB968	15 W, 25' cord, 18/2 SJT	26
XA572	Replacement Bulb	

LED WORK LIGHT

- 60 LED lights
- Heavy-duty 15' AC cord
- Heavy-duty 110 V adaptor
- 100,000 hours bulb life
- Water and oil resistant
- Hanging hook
- Unique On/Off switch

Model No. XC355



WORK LIGHTS & FLASHLIGHTS

METAL HALIDE WORK LIGHTS

- Bright, durable and virtually indestructible
- Self-righting, highly durable work light
- Internal ventilation system keeps light cold enough to touch
- String them in a series or use individually
- No set up, just plug it in
- Unique counter weighted design repositions to upright when knocked over
- Floating shock system protects bulb from jarring and striking
- Tough polycarbonate dome protects bulb from contact with hard objects and debris
- 8000-hour bulb life



Model No.	Mfg. No.	Light Output Lumens	Amps	Applications
XC332	WL175MH	15,000	1.6	Residential Construction, Remodelling, Light Manufacturing, Medium Rooms, Medium Outdoor Areas
XC334	WL400MH	40,000	3.6	Commercial Construction, Heavy Industry, Farm & Agriculture, Fire & Rescue, Large Area, Large Outdoor Area

ACCESSORIES

Model No.	Mfg. No.	Description
XC335	WL52230	180° Arc Reflector Shield

REPLACEMENT BULBS

XB213	M175/U	Replacement Bulb for XC332
XB215	M400/U	Replacement Bulb for XC334



SUPER SABRELITE® LASER SPOT™ 2000 SERIES

- Watertight to 500'
- Unbreakable ABS body, high impact polycarbonate lens
- Exclusive state-of-the-art Laser Spot™ xenon lamp module produces tightly focused collimated white light beam with 400% increased net candlepower
- Includes belt spring clip, stainless steel split ring and black lanyard
- Meets military specifications.
- Requires 3 C-cell alkaline batteries, not included
- Colours: Yellow or black. Length: 7 1/2"
- Diameter: 1 7/8"



- Model No. XA129** Yellow
- Model No. XA130** Black
- Model No. XB874** C Batteries, 12/pkg.
- Model No. XA012** Replacement bulb

MITYLITE™ 1900 SERIES

- Made of unbreakable space age hi-impact polycarbonate resin, 4 3/4" in length
- Laser Spot™ Xenon® lamp module provides 400% more light
- Equipped with a shirt clip, making it easy to fit into pockets, purses, tool kits, camera bags or glove compartments
- Safe to be used in gaseous or electrical hazardous environments
- Non-submersible • Colour: Yellow



Approvals

- UL Class I, Div 2: Group C,D, T3C
 CSA Class I, Div 2: Group ABCD, T3C
 Class II; Div 2; Group G
 AUS Ex ia s IIB T4 IP67
 Ex (CE) II 3 GD EEx nL IIC T4 135°C



- Model No. XA027**
REPLACEMENT BULB
Model No. XA018

HEAVY-DUTY RUBBER FLASHLIGHT

- Durable rubber construction
- Ribbed body for sure grip
- Water and shock resistant
- Push-button switch for easy handling
- Uses 2 D-cell batteries, not included
- Colour: Black and yellow



- Model No. SJ148**
- Model No. XA711** Replacement bulb
- Model No. XB875** Batteries, D-cell, 12/pkg.



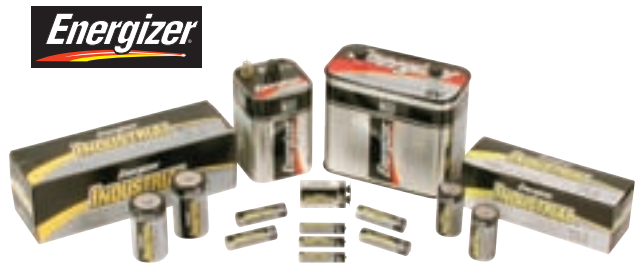
LED ALUMINUM FLASHLIGHT SET

- Set includes:
 - 6-LED 12" flashlight, takes 3 D batteries
 - 3-LED 8 1/4" flashlight, takes 3 AAA batteries
- Anodized aluminum housing
- 100,000-hour bulb life
- Soft rubber grip handle
- Batteries not included

Model No. XC336



ENERGIZER® BATTERIES



Sold per package

Model No.	Mfg. No.	Description	Qty /Pkg
ALKALINE INDUSTRIAL PACKAGING			
XB873	EN92	AAA/1,5 V	24
XB872	EN91	AA/1,5 V	24
XB874	EN94	C/1,5 V	12
XB875	EN95	D/1,5 V	12
XB876	EN22	9 V	12
ALKALINE			
XB996	A76BP2	1,5 V, Instruments	2
XA430	529	Lantern, 6 V, Spring	1
XA432	521	Lantern, 6 V, Screw	1

EXTENSION CORDS & LAMPS

THE PRO-TEC-TOR™ CIRCUIT BREAKER EXTENSION CORD

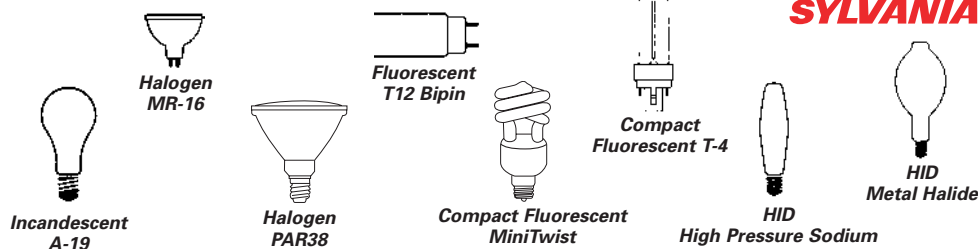
- The only extension cord with a circuit breaker that can be reset right at the outlet end
- Protects cord set from equipment overload, which can cause electrical fires
- Safety yellow SJTW cord

 LIND EQUIPMENT LTD.



Model No.	Mfg. No.	Description	Wire Ga/Cond.	Voltage	Cord Length'	Rating Amps
HEAVY-DUTY						
XA084	LE14-25CB	Single Outlet	14/3	125	25	15
XA073	LE14-50CB	Single Outlet	14/3	125	50	15
XB983	LE14-T6	Triple Outlet	14/3	125	6	15
XA054	LE14-T25	Triple Outlet	14/3	125	25	15
XA059	LE14-T50	Triple Outlet	14/3	125	50	15
CONTRACTOR-DUTY						
XC057	LE12-T25	Triple Outlet	12/3	125	25	15
XA055	LE12-T50	Triple Outlet	12/3	125	50	15
XA056	LE12-T100	Triple Outlet	12/3	125	100	15

LAMPS



Nominal Watts	Lamp	Base	Model No.	Mfg. No.	Volts	Qty/Case	Description	Avg. life	Lumen output	L.C.L."	M.O.L."
INCANDESCENTS											
Sold per package of 2											
40	A-19	Med.	XB114	40A/2P/24/6000	120-125	12	Inside frost, long life, 2/pkg.	6000 hrs	480	3 1/8	4 7/16
50	A-19	Med.	XB122	50A/RS/2P/RP/120V	120	24	Inside frost, rough service, 2/pkg.	1000 hrs	480	2	3 15/16
60	A-19	Med.	XB115	60A/2P/24/6000	120-125	12	Inside frost, long life, 2/pkg.	6000 hrs	650	3 1/8	4 7/16
100	A-19	Med.	XB117	100A/2P/24/6000	120-125	12	Inside frost, long life, 2/pkg.	6000 hrs	1270	3 1/8	4 7/16
100	A-19	Med.	XB123	100ARS2PRP	120	24	Inside frost, rough service, 2/pkg.	1000 hrs	1260	2 7/8	4 7/16
Nominal Watts	Lamp	Base	Model No.	Mfg. No.	Volts	Qty/Case	Description	Avg. life	Beam spread		
HALOGEN											
Sold per each											
20	MR-16	GU5.3	XC305	20MR16/FL35		12	Reflector, flood beam	4000 hrs	700		35°
50	MR-16	GU5.3	XB153	50MR16/FL40 (EXN)		12	Reflector, flood beam	4000 hrs	2000		40°
50	PAR20	Med.	XB143	50PAR20/CAP/NFL		130	Narrow flood	2500 hrs	1250		30°
50	PAR30	Med.	XB137	50PAR30LN/CAP/WFL		130	Wide flood	2500 hrs	500		50°
75	PAR30	Med.	XB140	75PAR30LN/CAP/WFL		130	Wide flood	2500 hrs	750		50°
45	PAR38	Med.	XB133	45PAR38/CAP/SPL/FL/30/130V		130	Flood	2500 hrs	1600		30°
90	PAR38	Med.	XB135	90PAR38/CAP/SPL/FL/30/130V		130	Flood	2500 hrs	3600		30°
120	PAR38	Med.	XB235	120PAR38/CAP/SPL/FL/30/130V		130	Flood	3000 hrs	5000		30°
Nominal Watts	Nominal length"	Base	Model No.	Mfg. No.	Qty/Case	Description	Avg. life	Initial lumen output			
FLUORESCENTS - T12											
Sold per case											
34	48	Med. Bipin	XB916	F34CW/SS/ECO (F40CW/SS/ECO)	30	Cool white <i>Supersaver</i> ®	20000+ hrs	2700			
60	96	Single Pin	XB068	F96T12/CW/SS	15	Cool white <i>Supersaver</i> ®	12000 hrs	5300			
Nominal Watts	Lamp	MOL"	Base	Model No.	Mfg. No.	Qty/Case	Description	Avg. life	Initial lumen output		
COMPACT FLUORESCENTS											
Sold per each											
13	MiniTwist	4.5	Med.	XB913	CF13EL/MINITWIST/BL/1	6	3000K, 82 CRI	8000 hrs	800		
9	T-4	6.5	G23	XB277	CF9DS827	50	2700K, 82 CRI	10000 hrs	580		
13	T-4	7.1	GX23	XB275	CF13DS/841/ECO	50	4100K, 82 CRI	10000 hrs	800		
Watts	Lamp	Base	Model No.	Mfg. No.	Qty/Case	Description	Avg. life (hrs)	Approx. lumens (initial)	Approx. lumens (mean)	CRI	Colour temp
HID - HIGH PRESSURE SODIUM											
Sold per each											
50	E-17	Medium	XB205	LU50/MED	20	Clear	24000+	4000	3600	22	1900K
150	E-17	Medium	XB208	LU150/55V/MED	20	Clear, 55 volt	24000+	15800	13400	22	2100K
400	ET-18	Mogul	XB202	LU400/ECO	20	Clear	24000+	50000	45000	22	2100K
HID - METAL HALIDE											
Sold per each											
175	BT-28	Mogul	XB213	M175/U	6	Clear, univ. burn	10000V, 7500H	14400V, 12800H	12000V, 10300H	65	4200K
250	BT-28	Mogul	XB214	M250/U	6	Clear, univ. burn	10000V, 10000H	22000V, 20000H	17000V, 14100H	65	4200K
400	BT-37	Mogul	XB215	M400/U	6	Clear, univ. burn	20000V, 15000H	36000V, 32000H	25000V, 20500H	65	4000K
1000	BT-56	Mogul	XB217	M1000/U	6	Clear, univ. burn	15000V, 9000H	110000V, 107800H	88000V, 86300H	65	4000K

*Other lamps available upon request