

WELDING TOOLS & ACCESSORIES

CAM ACTION CABLE CONNECTORS

- Fits cable sizes 4 through 4/0
- Manufactured from heavy wall precision machined brass alloy
- Brass body assembly slides into heavy-duty neoprene insulator with no external screws
- Compatible with most common brands



Model No.	Description
NT664	Male/Female Connector Set
NT649	Male Half with Insulator
NT650	Female Half with Insulator



INDUSTRIAL-DUTY SCRATCH BRUSHES

- Wood handle
- Choice of carbon or stainless steel bristles



Model No.	Bristles	Rows
LONG HANDLE BRUSHES		
WN994	Carbon Steel	3 x 19
NT608	Carbon Steel	4 x 19
NT611	Stainless Steel	3 x 19
NT612	Stainless Steel	4 x 19
SHOE HANDLE BRUSHES		
708-1030	Carbon Steel	3 x 16
708-1040	Carbon Steel	4 x 16
708-1070	Stainless Steel	3 x 16
708-1080	Stainless Steel	4 x 16
"TOOTHBRUSH" CLEANING BRUSH		
NT615	Stainless Steel	3 x 7

HEAVY-DUTY "C-STYLE" GROUND CLAMP

- C-type jaws are adjusted by screw lever
- Rubber insulated cable connector
- 600 amps

Model No. NP527

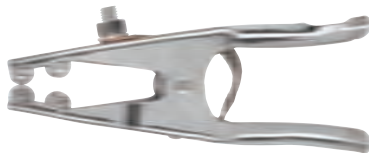


GROUND CLAMPS

- Manufactured from nickel-plated steel with forged brass conductors
- Heavy-duty springs provide positive strength at jaws
- BZ947 ideal for farm and light shop work
- NT662 for portable gas driven welders, fully insulated hinge and spring prevents arcing



Model No.	Amps
BZ947	300
NT662	500

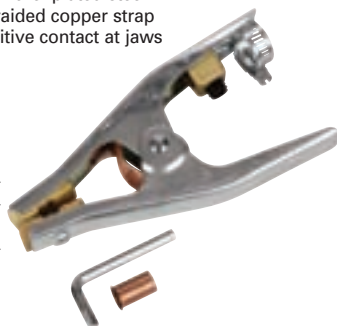


HEAVY-DUTY GROUND CLAMPS

- Manufactured from heavy-duty nickel-plated steel
- Forged brass conductors and braided copper strap
- Heavy-duty spring provides positive contact at jaws
- Includes Allen wrench



Model No.	Amps
NT668	300
NT669	500



SHORTSTUB™ ELECTRODE HOLDERS

- Manufactured from copper alloy for maximum conductivity and strength
- Fibreglass insulators are designed to withstand intense heat and impact



Model No.	Description	Amps
NT629	Shortstub™ w/Neck Ring	400
NT631	Shortstub™ w/Neck Ring	600
NT630	Slimline – Bernard® Style	400