

# DOCK EQUIPMENT & ACCESSORIES

## RUBBER WHEEL CHOCK

- Highly resistant to abrasion, impacts, corrosion, sun, salt, ozone and oil
- Steel ring on back
- 6 1/2" W x 9 1/2" L x 8 1/2" H
- Weight: 11 lbs.

Model No. KH032

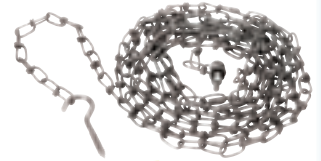


## WHEEL CHOCK ACCESSORIES

### SECURITY CHAIN

- 18 ft. steel chain attaches chock to dock
- Prevents misplacement, theft
- Comes with hook
- Weight: 4 lbs.

Model No. KH027



## IRON WHEEL CHOCKS

- Suited for your toughest jobs

KH029



KH587



KH017



Model No.	Chock Material	Colour	Dimensions			Wt. lbs.
			L"	x W"	x H"	
KH029	Ductile Iron	Blue	12	x 8	x 9	19
KH587	Ductile Iron	Safety Yellow	8	x 9 1/8	x 8 1/2	15
KH017	Ductile Iron	Safety Yellow	10 1/2	x 10	x 10 3/4	23

### CAUTION SIGN

- 10" x 14"
- Black letters on yellow field
- Weight: 6 oz.

Model No. KH030



### WHEEL CHOCK WALL BRACKET

- Sturdy grey metal construction
- Fits most sizes of wheel chocks (eg. KH032, KH603)
- Prevents loss of chock

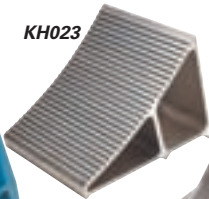
Model No. KH666



## ALUMINUM WHEEL CHOCKS

- High in strength but lightweight
- Resists the effects of oil, salt, corrosion and weather
- Non-sparking

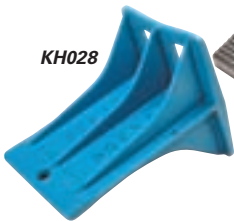
KH023



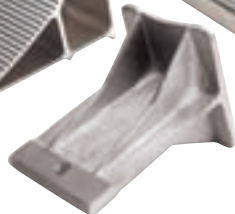
KH022



KH028



KH031



Model No.	Dimensions			Wt. lbs.
	L"	x W"	x H"	
KH023	6	x 7	x 6	4
KH022	7	x 10 3/4	x 8	7
KH031	6	x 9	x 7	4
KH028	8	x 11 1/2	x 9	9

## URETHANE WHEEL CHOCKS

- Safety orange for greater visibility
- Moulded-in hole through width of chock for attaching chain (sold separately)

Model No. KH024

- For use with trailers
- 7 3/4" W x 11" L x 8" H
- Wt.: 4.5 lbs.

Model No. KH025

- For use with off road vehicles
- 14" W x 17" L x 14" H
- Wt.: 25 lbs.



## LAMINATED RUBBER CHOCK

- Designed to fit curvature of tire for a strong grip
- Extra heavy duty laminated rubber and steel construction for use with heavy utility trucks and equipment
- Load capacity: Up to 40,000 lbs.



Model No.	Construction	Approx. Size			Wt. lbs.
		L"	x W"	x H"	
KH603	Laminated	8	x 8	x 8	14

## RAIL CHOCKS

- Provides effective means of blocking railcars for safe loading and unloading
- Steel points on chock heads bite into rail to prevent sliding
- Standard finish in yellow
- Integral 7 1/2" x 9 1/2" sign
- Single rail chock for stoppage in one direction; double rail chock for stoppage in both directions
- Choice of exposed (above ground) or flush (level with ground) chocks

KH021



KH016



Model No.	Description	Wt. lbs.
<b>FOR EXPOSED RAIL</b>		
KH016	Single Chock	12
KH021	Double Chock	16
<b>FOR FLUSH RAIL</b>		
KH015	Single Chock	12
KH020	Double Chock	16

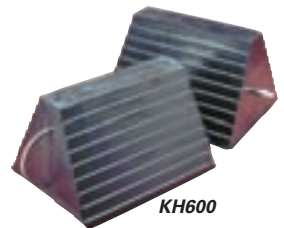
## RUBBER CHOCKS

Fabricated of a tough rubber compound, reinforced for maximum wearability and strength.

**Type A** - Patented easy grip handle may be used with chains

**Type B** - Traditional eyebolt for sturdy chain connection

KH601



KH600

Model No.	Type	Approx. Size			Wt. lbs.
		L"	x W"	x H"	
KH600	A	9	x 8	x 6	10
KH601	B	9	x 8	x 6	10